



San Joaquin
County SELPA



LSH WINTER SYMPOSIUM



February 16, 2024

8:30 AM - 3:30 PM

2707 Transworld Drive, Stockton, CA 95206



Registration Fee and Links:

SJC SELPA, Stockton USD, Lodi USD, UOP, & Delta College: \$75

Other Agencies/School Districts: \$90

[Journal](#)

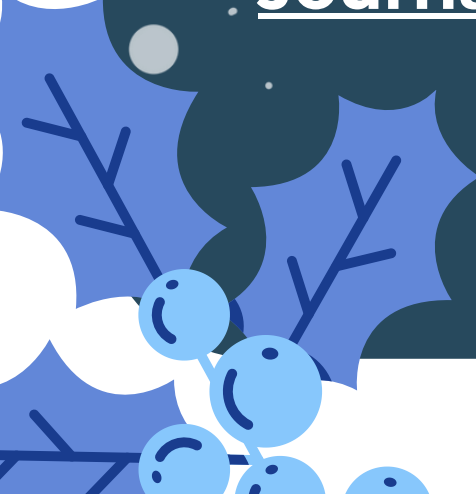
[Check](#)

[Credit Card](#)

**Breakfast & Lunch
Included!**



SAN JOAQUIN COUNTY
OFFICE OF EDUCATION





Autism: From the First Steps, to Advanced Communication Development, with Parent Partnerships Along the Way

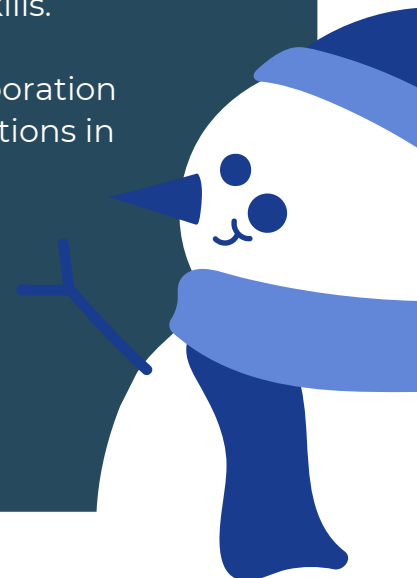
Participants will leave this full-day workshop with evidence-based strategies and ready-for-use materials to effectively provide intervention from sensory regulation to developing higher-level executive function skills. This workshop will cover how to efficiently provide intervention from regulating the sensory system, implementing augmentative/alternative technology, improving communication outcomes, and developing higher-level executive function skills. Participants will learn how to integrate parent partnerships throughout intervention across the stages, even with limited time and resources.



Workshop Objectives:

Participants will leave this workshop...

- Empowered with highly effective intervention strategies to maximize gains across stages of development from sensory regulation to high level executive function skills.
- Ready to put research into practice with clinically-tested, educationally-rich activities that treat the whole child by simultaneously targeting communication, literacy, executive function, social-emotional development, and motor skills.
- With strategies and materials that make parent collaboration easy, engaging, and effective despite real-world limitations in time and resources.



ABOUT THE PRESENTER

About Kelly Vess, MA, CCC-SLP

Kelly Vess is a full-time public school speech language pathologist, servicing diverse groups of preschoolers since 2003.

Aside from being a seasoned, public school full-time preschool SLP, Kelly is an international author, speaker, clinical researcher, and clinical supervisor of speech pathology interns from Wayne State University and Eastern Michigan University since 2006.



This course meets the qualifications for 6 hours of CPD for Speech-Language Pathologists as required by the California Speech-Language Pathology and Audiology Board