



SAN JOAQUIN COUNTY
OFFICE OF EDUCATION

District Continuous Improvement & Support

October 2021

Brain Teaser:

What is best used and appreciated when broken,
represents a beginning and an end,
is a core reason why the platypus stands
alone amongst mammals,
is used in vaccines and surreal art dreams,
and is a favorite in many people's morning routines.



What am I?

This will be the first of regular monthly brain teaser section.
The answer to this riddle will be in next month's email below the riddle.

Continuous Improvement and Support Team's Professional Learning Brochure

Our 2021 - 2022 Professional Learning

Our Team

Continuous Improvement & Support

Our Mission

Our Vision

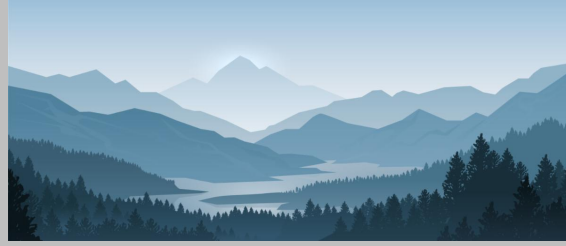
Professional Learning and Technical Assistance Across the Five Domains of a Multi-Tiered System of Support

Professional Learning	Technical Assistance	Partners and Community Engagement	Internal Policy and Practice
<ul style="list-style-type: none"> • Facilitated Learning • Self-Directed Learning • Coaching • Peer Observation • Peer Support • Peer Review • Peer Coaching • Peer Mentoring • Peer Support • Peer Review • Peer Coaching • Peer Mentoring 	<ul style="list-style-type: none"> • Coaching • Peer Observation • Peer Support • Peer Review • Peer Coaching • Peer Mentoring 	<ul style="list-style-type: none"> • Districtwide Professional Learning • Districtwide Professional Learning • Districtwide Professional Learning • Districtwide Professional Learning • Districtwide Professional Learning • Districtwide Professional Learning 	<ul style="list-style-type: none"> • Districtwide Professional Learning • Districtwide Professional Learning • Districtwide Professional Learning • Districtwide Professional Learning • Districtwide Professional Learning • Districtwide Professional Learning

The CIS team is proud to share our **2021 - 2022 Professional Learning Brochure**, which includes the scope of professional learning and partnership opportunities our team can provide!

Events, County News and Resources

Building Up Your Armor: Combating Stress to Lead at Your Best



November 10, 2021

2:30PM-4:30PM

ZOOM

This Session Offers:

- Group activities to strengthen team bonds and build resilience
- A brief history of stress and how it leads into the new model of stress
- An exploration of where we are at relevant to high stress and COVID
- An exploration of techniques to help alleviate excess stress and build psychological armor/resilience

[Register Here!](#)

CIS Workshop : School Plan Development & Continuous Improvement



November 18, 2021

9:00AM-12:00PM

Virtual ZOOM

or

February 8, 2022

9:00AM-12:00PM

In-Person

This workshop will provide site leaders guidance and tools to develop effective SPSAs, The requirements for Comprehensive Support and Improvement (CSI) or Additional Targeted Support and Improvement (ATSI) will also be discussed.

There is no charge to participate.

[Register Here!](#)

Local Control And Accountability Plan LCAP Network



November 19, 2021

9:00AM-11:00AM

ZOOM

Understanding the One-Time Supplement to the Annual Update to the 2021-22 LCAP

January 21, 2021

9:00AM-11:00AM

ZOOM

Understanding the new LCAP requirements and template

March 4, 2021

9:00AM-11:00AM

ZOOM

LCAP Template with a focus on Expenditure Tables and Increased or Improved Services section

The LCAP Network is designed to bring together LCAP district and charter leaders to share news and updates, promising practices and collective expertise around the LCAP process. Agendas and presentations are developed and presented collaboratively between program and fiscal services.

[Register Here!](#)

How to Scaffold Instruction to Accelerate Student Learning



One of the key features of effective Accelerated Learning is for teachers to scaffold instruction so that students can access grade level learning despite learning gaps. New York State Department of Education's webpage "[Supporting All Students: Resource Guides for Scaffolding Instruction of English Language Arts and Mathematics](#)", provides Scaffolding Guides for grades 3 - 8 for ELA and Math, lists of ELA and Math scaffolds, a PD Toolkit focused on scaffolding instruction, and more.



Native American Heritage Month Colonial Williamsburg Resources

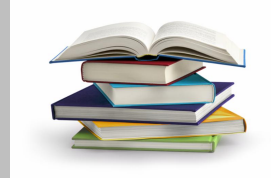
Colonial Williamsburg has several classroom resources to help students learn more about our country's Native American history. Such resources include a [Resource Library](#), a [YouTube Channel](#), and articles such as [Native Knowledge 360 Education Initiative](#), and the Library of Congress [Native American Heritage Month](#) website.

Tutoring Program Guidance



Learning Policy Institute's article, "[The Importance of Getting Tutoring Right](#)" (2021) provides helpful guidance for school and district leaders in developing and implementing an effective tutoring program.

**Psychology and the Good Life -
Free High School Curriculum**



“Psychology and the Good Life” (PGL) is based on Yale professor Dr. Laurie Santos’s ultra-popular class by the same name. PGL was Yale’s most popular class in the university’s 300-year history, and now your high school students can learn about what the science of psychology says about how to live a truly happy life.

[Psychology and the Good Life High School Curriculum](#) Webpage



Article: “Defending a Teacher’s Right to Disconnect”

Edutopia’s article [“Defending a Teacher’s Right to Disconnect”](#) (2021), outlines five do-able strategies school leaders can implement to support healthy technology boundaries with and for their teachers. These strategies are a helpful way to help address teachers’ social-emotional well being.

Article : “Giving Students More Authority in Classroom Discussions” (Edutopia, 2021)



Well-planned and well-facilitated classroom discussions enable students to connect more meaningfully to content and to one another, thus enhancing authentic engagement and a vibrant, learning-centered classroom community. Edupia’s [article on student-led classroom discussions](#) provides educators helpful strategies and guidance for creating discussion-based learning experiences.



Developed by Insight Policy Research, American Institutes for Research, and Attendance Works, the [Attendance Plan Reflection Tool for LEAs](#) guides district staff in a review of their existing attendance plans. This tool includes attendance areas to consider as well as reflection questions to help districts identify areas they can strengthen.

Region 6 State Seal of Civic Engagement Network



November 4, 2021
3:30PM-5:00PM
ZOOM

December 2, 2021
3:30PM-5:00PM
ZOOM

February 3, 2021
3:30PM-5:00PM
ZOOM

March 3, 2021
3:30PM-5:00PM
ZOOM

May 5, 2021
3:30PM-5:00PM
ZOOM

Is your district considering implementing the California State Seal of Civic Engagement? Are you looking to build your civic engagement leadership capacity? Join others from throughout the region to discuss opportunities and challenges that come with

implementing an effective civic engagement program.
There is no charge to participate.

[Register Here!](#)

Additional Resources



What Are We Reading or Listening to?

Connor Sloan, Ed.D.

BOOK

**Equity By Design:
Delivering on the Power & Promise of UDL**

Authors: Mirko Chardin & Katie Novak



Currently I am reading *Equity By Design: Delivering on the Power & Promise of UDL* by Mirko Chardin & Katie Novak. This book is filled with great resources and focused on evidence-based intentional learning that supports "reconstructing our schools into places where every student has the opportunity to succeed." A common theme throughout the book that is reinforced is the importance of offering choices in what students learn and that "the power of design and learning shifts from teachers to learners as UDL implementation moves from emerging toward expert practice." As an educator I am constantly searching for ways to best meet the needs of a diverse population of learners and throughout this book evidence-based approaches to meeting the academic, social, emotional, and behavioral needs of students are provided in practical action-oriented ways.



About Us

In partnership with our educational community, the Continuous Improvement and Support team leads with equity, designs and facilitates relevant and innovative learning that fosters relationships and is responsive to student and adult needs.

Visit our
website



Prepared by: San Joaquin County Office of Education, Continuous Improvement & Support

Continuous Improvement & Support Team

Connor Sloan, Director II | Sally Glusing, Director I | Stephanie Hitchcock, LCAP Director I
Fred Cochran, Coordinator II | Lisa Neugebauer, Coordinator II
Lisa Bowman, Coordinator II | Richard Woodruff, Coordinator II

