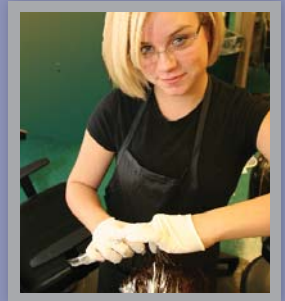


San Joaquin County PUBLIC SCHOOLS DIRECTORY



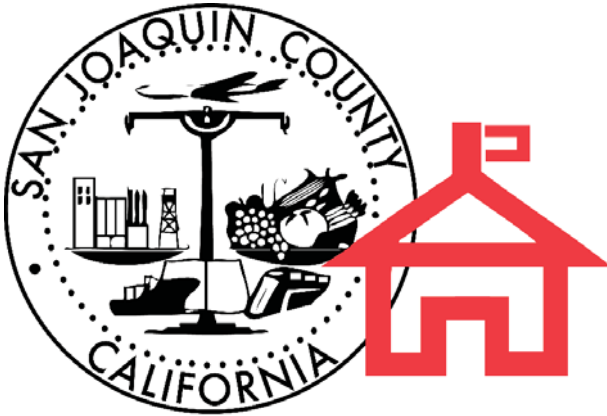
Courtesy of



San Joaquin County Office of Education

2009 - 2010

AN OFFICIAL PUBLICATION OF



SAN JOAQUIN COUNTY OFFICE OF EDUCATION

providing support and leadership to San Joaquin County students and schools

San Joaquin County Board of Education

Dave Sorgent, *president*

Jill Fritchen, *vice-president*

Anthony J. Gutierrez

Gretchen Talley

Mark A. Thiel

Produced by SJCOE Public Information Office

2901 Arch-Airport Road

P.O. Box 213030

Stockton, CA 95213-9030

www.sjcoe.org

San Joaquin County Office of Education is a regional agency that strives to provide educational leadership, resources, and service to assist school districts to be effective facilities of learning for all pupils.

All information in this directory was submitted by individual districts and is considered accurate as of August 2009.

*A message from Fredrick A. Wentworth,
San Joaquin County Superintendent of Schools*



Welcome to the 2009–10 San Joaquin County Public Schools Directory. In this publication you will find information about our 14 school districts, more than 220 schools, and the various programs and services offered throughout the county.

San Joaquin County serves more than 136,000 of the most socially, ethnically, linguistically, and economically diverse student populations. It is my hope that this directory helps our 7,000 teachers, 500 administrators, and 7,000 other staff members become knowledgeable of the resources available to meet our high academic, social, and emotional standards.

Since this provides valuable information about our schools, we are launching an online version of the directory. Please visit www.sjcoe.org/directory for our most up-to-date version of the directory. The online directory will allow you to download and print throughout the year.

I encourage you to utilize this instrument as a means to make certain that our community and schools work together to continue to provide our students, the future leaders of our community, with the tools needed to be successful in life.

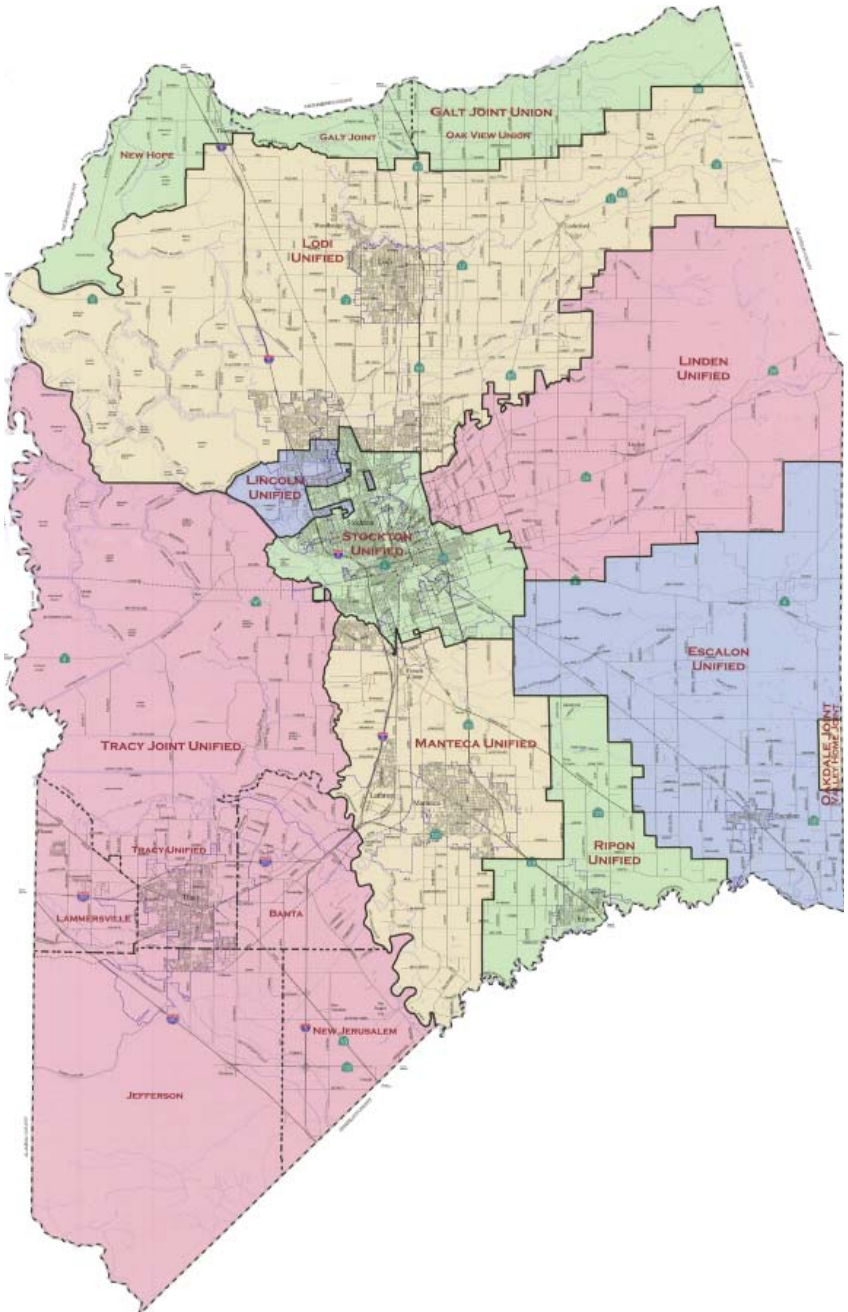
Thank you for supporting San Joaquin County schools. Working together, we can ensure a better education and brighter future for all of San Joaquin County's students.

Sincerely,

A handwritten signature in black ink that reads "Fredrick A. Wentworth". The signature is written in a cursive style with a long horizontal flourish at the end.

Fredrick A. Wentworth, Ed.D.
San Joaquin County Superintendent of Schools

San Joaquin County School Districts



San Joaquin County

Meeting Dates of Governing Boards

DISTRICT	TIME	DAY OF WEEK
Banta Elementary School District	7:00 p.m.	2 nd Thursday
Escalon Unified School District	7:00 p.m.	1 st and 3 rd Tuesday
Jefferson Elementary School District	6:30 p.m.	2 nd Tuesday (with exceptions)
Lammersville Elementary School District	7:00 p.m.	4 th Wednesday
Lincoln Unified School District	7:30 p.m.	2 nd and 4 th Wednesday (with exceptions)
Linden Unified School District	7:00 p.m.	3 rd Wednesday
Lodi Unified School District	7:00 p.m.	1 st and 3 rd Tuesday
Manteca Unified School District	7:00 p.m.	2 nd and 4 th Tuesday (with exceptions)
New Hope Elementary School District	7:00 p.m.	2 nd Monday
New Jerusalem Elementary School District	6:30 p.m.	2 nd Tuesday
Oak View Union Elementary School District	7:30 p.m.	3 rd Thursday
Ripon Unified School District	7:00 p.m.	2 nd Monday
San Joaquin County Board of Education	12:00 p.m.	3 rd Wednesday (with exceptions)
San Joaquin Delta Community College District	5:00 p.m.	1 st and 3 rd Tuesday
Stockton Unified School District	7:00 p.m.	2 nd and 4 th Tuesday
Tracy Unified School District	7:00 p.m.	2 nd and 4 th Tuesday

Table of Contents

San Joaquin County Office of Education.....	7
Map of San Joaquin County Office of Education.....	8
Meeting Rooms within San Joaquin County Office of Education	9
Services of San Joaquin County Office of Education.....	10
County Board of Education.....	15
Office of the Superintendent.....	15
Center for Educational Development and Research.....	15
Business Services.....	16
Data Processing JPA.....	16
Student Programs and Services	17
Human Resources	17
County Operated Schools and Programs.....	18
Alternative Education Programs	18
Educational Services	19
Special Education/SELPA	25
San Joaquin County School Districts	27
Banta Elementary	28
Escalon Unified.....	29
Jefferson Elementary	31
Lammersville Elementary.....	33
Lincoln Unified	34
Linden Unified	37
Lodi Unified	39
Manteca Unified	49
New Hope Elementary	55
New Jerusalem Elementary	56
Oak View Union Elementary	57
Ripon Unified	58
San Joaquin Delta Community College	60
Stockton Unified.....	61
Tracy Unified	72
Charter Schools.....	77
Agencies and Organizations	82
California School Boards Association	83
District Associations	83
Parent Teacher Student Association	85
Indexes	86
Charter Schools	87
Districts	88
Personnel.....	89
Schools	101

San Joaquin County Office of Education

(209)468-4800 • www.sjcoe.org

Map of San Joaquin County Office of Education

Mailing: P.O. Box 213030 • Shipping: 2707 Transworld Drive • Stockton, CA 95213-9030

San Joaquin County Office of Education
 Fredrick A. Wentworth, Superintendent



Education Service Center

- County Operated Schools & Programs
 - Education Services
 - Migrant Education
 - Multilingual Education
 - Special Education/SELPA
- Conference Rooms
- Alpine
 - Bungallow
 - Greenwood 1, 2, & Auditorium
 - Martville 1, 2, & Auditorium
 - Emerson
 - Greenwood 1, 2, 3, 4, & 5

Community School

- Classrooms
- Bixler
 - Emerson
 - Fair Oaks
 - Garden
 - Moore
- Massdale
 - Schneider
 - Stockton High School
 - Telegraph
 - Willowood

Education Service Center (ESC)
2707

Entrance

Parking

Future SJOE Site
2721

Entrance

Parking

Venture Academy
2829

Entrance

Parking

Professional Development Center (PDC)
2857

Entrance

Parking

Career & Technical Education Center (CTEC)
2911

Entrance

Parking

- CEDR
 - Career & Technical High
 - Regional Occupational Centers/Programs
 - Workforce Development
- Computer Labs
 - Instructional Technology
 - Science & TOPS
 - Teacher Development

Parking SJOE

Venture Academy
2720

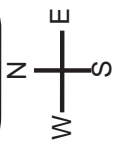
Parking
P4
P3
P2
P1

Nelson Administration Center
2901

Entrance

Parking

U.S. Post Office



Arch Airport Road

Cantas Lane

Highway 99

Stockton

Manteca

Giannacchini Lane

San Joaquin County Office of Education - Conference Rooms

Education Service Center

468-9241

Alpine
Bungalow
Burwood 1
Burwood 2
Burwood Auditorium
Chartville 1
Chartville 2
Chartville Auditorium

Emerson
Greenwood 1
Greenwood 2
Greenwood 3
Greenwood 4
Greenwood 5
Island
Justice
Kingston

Nelson Administration Center

468-9241

Board Room
Locke 1

Locke 2
Locke Auditorium

Professional Development Center

468-4883

Delphi

Open Forum

Computer Labs

468-4883

Burbank
Enterprise

Independent
Weber

Classrooms

468-4859

Atlanta
Bellota
Brunswick
Castle
Everett
Fairchild

Four Tree
Lafayette
River
Salem
Summer Home

Venture Academy Family of Schools **468-5940**

Classrooms

Bixler
Emerson
Fair Oaks
Garden
Moore

Mossdale
Schneider
Stockton H.S.
Telegraph
Wildwood

Services of San Joaquin County Office of Education

AB 2913 Authorizations (Formerly SB395).....	468-4865
AB 430 Training.....	468-4967
Academic Decathlon	468-4866
Academic Pentathlon.....	468-4866
Accounting System Coordination	468-4830
Accounts Control	468-5907
Accounts Receivable County Schools.....	468-9207
Administrative Services Credential Program.....	468-9172
Advanced Placement.....	468-9189
Advancement Via Individual Determination (AVID)	468-9189
After School Education Safety (ASES) (21st CCLC).....	468-4960
Alternative Programs	468-4847
Artists-in-Schools.....	468-4973
Assessments and Accountability	468-9177
Assessment – Statewide Projects	468-9257
Attendance Reports.....	468-4842
Bilingual Cross-Cultural, Language, and Academic Development (BCLAD).....	468-4865
Beginning Teacher Support & Assessment (BTSA).....	468-9190
Bilingual and English Language Acquisition Programs and Services	468-4865
Bilingual/Teacher Training Project	468-4865
California English Language Development Training (CELDT)	468-4865
California Preschool Instructional Network.....	468-9295
California Regional Environmental Ed Community (CREEC) Region 6A.....	468-4880
California Student Aid/FAFSA Support	468-9189
California Teachers' of English Learners (CTEL) (Formerly CLAD)	468-4865
California Technology Assistance Project (CTAP) Grant	468-4883
Capitol Area Science Education Leaders (CASEL).....	468-4880
CASST School Leadership Coaching Program	468-9082
Center for Civic Education Programs	468-9021
Charter Schools.....	468-4830
Commercial Warrants-County Schools	468-4834
Commercial Warrants–Districts	468-4845
Community Involvement.....	468-9021
Community Science/Environmental Education Partnerships	468-4880
Construction Facilities	468-9122
Coordinated School Health Program.....	468-4847
County Operated Schools and Programs.....	468-9167
County Operated Schools and Programs, School Nurse	468-9167
County High School Honor Band & Choir Concert.....	468-4973
County Middle School Honor Band & Choir Concert.....	468-4973

CSET/LOTE.....	468-4865
Delta Educators for Learning, Teaching and Action (DELTA)	468-4880
Delta Sierra Science Subject Matter Project	468-4880
Digital Video	468-4883
Dinner With A Scientist	468-4880
Disaster Preparedness	468-4960
Distance Learning.....	468-4883
Early Childhood Education	468-9031
Ed-Join – Statewide Jobs.....	www.ed-join.org
Educational Foundation.....	468-9061
Educational Services	468-4856
English Learner Leadership Academy (ELLA, Formerly MTTI)	468-4865
Employee Attendance County Schools:	
A-L	468-5955
M-Z	468-9078
English Language Learners.....	468-4978
Employment Opportunities at SJCOE	www.sjcoe.org
English Language Learners.....	468-4978
Environmental Education.....	468-4880
Expulsion/Interdistrict Appeals.....	468-9107
Fine Arts Day	468-4866
Fire Up Your Future	468-4883
Foreign Language	468-4865
Gann Limits – County Schools	468-4827
Grants	468-9297
Great Explorations in Math and Science (GEMS) Regional Training Site.....	468-4880
Hardware Repair	468-4872
Health Careers Pathway.....	468-4960
Health Education/Services	468-4960
HealthWISE Family Events	468-4880
HealthWISE Pharmacy Student and School Partnership.....	468-4880
Help Desk (helpdesk@sjcoe.net)	468-4874
HIV/AIDS Program	468-4960
Homework Hotline	943-7588
Human Resources.....	468-9226
Industrial Accidents/Injuries	468-4838
Information Technology	468-4870
Instructional Technology	468-4883
K-12 Alliance for Math/Science.....	468-9096
Language Acquisition and Development	468-4978
Language Arts & Assessment/Accountability	468-9177
Legal Services	468-4850
Livescan Fingerprinting	468-9145
Lottery	468-9053

Math Smart Tutoring.....	468-9021
Math, Science, & Beyond Family Event Program.....	468-4880
Mathematics.....	468-9177
Media Duplication.....	468-4883
Medi-Cal Admin Activity (MAA)	468-4960
Medi-Cal LEA Vendor	468-9288
Mental Health Services Act.....	468-4960
Migrant Education.....	468-9200
Mock Trial.....	468-4866
Multilingual Education.....	468-4865
Multiple Pathways Institute.....	468-9057
Music Programs.....	468-4973
National Board Certification.....	468-4967
NCLB Program Improvement Districts/Schools.....	468-9056
Operations.....	468-9061
OS X Technical Support	468-4883
PAR Consortium.....	468-9155
Paraprofessional Teacher Training Program	468-5906
Parent Involvement.....	468-9021
Partnerships for Science Education	468-4880
Payroll - Countywide Payroll Taxes & Payments.....	468-4838
Payroll - Direct Service School Districts	468-4838
Payroll - District System User Support	468-4835
Payroll & STRS Retirement.....	468-4837
Payroll, PERS, FICA/OASDI	468-4840
Payroll/Benefits County-wide by employee last name: A-F.....	468-4832
Payroll/Benefits County-wide by employee last name: G-N	468-9205
Payroll/Benefits County-wide by employee last name: O-Z	468-9240
Peer Helping Conference	468-4960
Physical Education	468-4960
Pinnacle Team.....	468-4866
Pre-School Health Services, First Five	468-9296
Project Citizen	468-9021
Project IMPACT - Teacher Intern Program	468-9116
Public Information Office	468-4937
Purchasing.....	468-9127
QEIA	468-9082
Reading First Regional Technical Assistance Center (RTAC).....	468-4868
Reading Implementation Center.....	468-4967
Reading/Language Arts.....	468-9177
Region 6 Service Learning.....	468-9021
Region 6 Service Learning Training & Technical Assistance Program.....	468-9021
Regional System of District and School Support.....	468-9056
Revenue Deposits - County Schools.....	468-9298

Revenue Deposits - Districts	468-9233
Revenue Limits - Form K-12.....	468-9053
Revenue Limits - Form O	468-9053
Robotics Lab.....	468-4883
ROC/P Regular Entitlement.....	468-9053
SACS Reporting - Budget - County Schools	468-4828
SACS Reporting - Budget - District - Interim/Budget.....	468-5907
SACS Reporting - Budget - Districts - Unaudited Actuals	468-5907
SACS Reporting - County Schools Accounting	468-4827
Safe & Drug Free Schools -Title IV	468-4960
San Joaquin Biotech Consortium	468-4880
SB 472 Training.....	468-4967
SB 1292 468-4865	
School Improvement Team.....	468-4967
School Violence Reduction	468-4960
Science 468-4880	
Science & Environmental Education Student Events	468-4880
Science Education.....	468-4880
Science Education Curriculum and Teacher Training Projects:.....	468-4880
Science Fair.....	468-4880
Science Olympiad.....	468-4866
Science & Tech. Asst. for Rural Teachers & Small Districts (Science STARTS) ..	468-4880
SJCOE Productions.....	468-9166
Small District Science Professional Development Consortium	468-4880
Software Preview.....	468-4883
Special Education.....	468-9279
Special Education Funding	468-9053
Special Education Local Plan Area (SELPA).....	468-4925
Spelling Bee	468-4866
Star Lab - SPACE Consortium	468-4880
State and Federal Programs	468-9177
STRS Counselors.....	468-4864
Student Activities & Events.....	468-4866
Student and Community Events.....	468-4880
Student Assistant Intervention Team (SAIT).....	468-4967
Student Leadership Academies.....	468-4883
Student Programs and Services.....	468-9266
Subfinder/Absences	(http://subfinder@sjcoe.net) 468-4970
Substitute Services.....	468-4863
Teacher Apprenticeship Program	468-5906
Teacher Development.....	468-9116
Teacher Internships/Credential Programs	468-9116
Teacher Professional Development and Science Education Support	468-4880
Teachers College of San Joaquin (www.teachersj.org).....	468-9155

Teaching Opportunities for Partners in Science (TOPS) Retired Scientist Prog. .	468-4880
Teaching, Experimentation, Achievement & Mentoring in Science (TEAM Science)	468-4880
Technology Professional Staff Development	468-4883
Teenage Pregnancy Prevention	468-4960
Title III Technical Assistance.....	468-4865
Tobacco Use Prevention Ed (TUPE)	468-4960
Transportation Report County Schools	468-4827
Valenzuela.....	468-9082
Video Conferencing.....	468-4883
We The People.....	468-9021
Williams Settlement.....	468-9082
Workers Compensation County Schools.....	468-4838
Writing Reform Institute for Teaching English (WRITE).....	468-4865

County Board of Education

	Term Expires
Sorgent, Dave - Area Five President	2012
Fritchen, Jill - Area Three Vice-President	2012
Gutierrez, Anthony J. - Area Four	2014
Talley, Gretchen - Area One	2012
Thiel, Mark A. - Area Two	2012

*The County Board of Education meets the third Wednesday
of every month (with exceptions), at 2901 Arch-Airport Road, Stockton*

Office of the Superintendent

Nelson Administration Center • 2901 Arch-Airport Road • FAX: 468-4975

Wentworth, Fredrick A. County Superintendent468-4802
 Stanton, Janai..... Executive Assistant to the Superintendent.....468-9151
 (jstanton@sjcoe.net)

Mick Founts, Deputy Superintendent, Student Programs & Services468-9033
 James C. Thomas, Deputy Superintendent, Business Services468-4807
 Gary Dei Rossi, Assistant Superintendent, Educational Services468-9027
 James Mousalimas, Assistant Superintendent, Co. Operated Schools & Prog....468-9107
 Kathleen Skeels, Assistant Superintendent, Special Education/SELPA.....468-4925

Legal Services468-4850
 STRS Counselors.....468-4864

Center for Educational Development & Research (CEDR)

*Career & Technical Education Center • 2911 Transworld Drive
 General Information: 468-5914 • FAX: 468-9235*

Cornish, Rick..... Director 468-5924
 (rcornish@sjcoe.net)
 Arguelles, Johnny Assistant Director 468-5926
 (jarguelles@sjcoe.net)
 Thomasson, Mike Sr. Programmer 468-5924
 (mthomasson@sjcoe.net)

Business Services

Nelson Administration Center • 2901 Arch-Airport Road • 468-4830 • FAX: 468-9244

Thomas, James C...... Deputy Superintendent **468-4807**
(jthomas@sjcoe.net)
Monegan, Linda..... Executive Assistant 468-4807
(lmonegan@sjcoe.net)

County Office Business Services

Dexter, Karyn..... Division Director 468-4824
(kdexter@sjcoe.net)
Gardner, Susie..... Payroll Supervisor 468-4832
(sgardner@sjcoe.net)
Grossman, Kelly Director III 468-4835
(kgrossman@sjcoe.net)
Martinez, Terrell Coordinator II 468-4828
(tmartinez@sjcoe.net)
Morris, Janell Program Manager 468-4838
(jmorris@sjcoe.net)
Tate, Kelly Coordinator II 468-4827
(ktate@sjcoe.net)

Information Technology/Data Processing/Joint Powers Agreement

General Information: 468-4870

Springer, Jerry Division Director 468-4870
(jspringer@sjcoe.net) FAX: 468-4879

Operations/Purchasing/Facilities

Starr, Mary Joan (Mamie)..... Division Director 468-9061
(mstarr@sjcoe.net)
Clark, Greg Director II 468-9061
(gclark@sjcoe.net)
Villegas, Felix Project Leader II 468-9061
(fvillegas@sjcoe.net)

School District Business Services

Yorba, KT.....	Division Director.....	468-4830
(kyorba@sjcoe.net)		
Blote, Jeri.....	Coordinator II.....	468-5907
(jblote@sjcoe.net)		
Lorenz, Nicole.....	Coordinator II.....	468-9053
(nlorenz@sjcoe.net)		
Schafer, Carla.....	Coordinator II.....	468-4829
(cschafer@sjcoe.net)		

Student Programs and Services

Nelson Administration Center • 2901 Arch Airport Road

Founts, Mick.....	Deputy Superintendent.....	468-9033
(mfounts@sjcoe.net)		
Irvin, Denise.....	Executive Assistant.....	468-9033
(dirvin@sjcoe.net)		FAX: 468-4988

Grants

Biedermann, Scott.....	Manager.....	468-9297
(sbiedermann@sjcoe.net)		FAX: 468-4987

Human Resources

FAX: General: 468-9226 • Credentials: 468-9194 • Fingerprinting: 468-9142

DePrater, Karen.....	Director III.....	468-4851
(kdeprater@sjcoe.net)		
Castellanos, Audrey.....	Project Leader I.....	468-5952
(acastellanos@sjcoe.net)		
Christensen, Aggie.....	Program Manager I.....	468-9039
(achristensen@sjcoe.net)		
Thomson, Lorna.....	Credential Supervisor.....	468-4899
(lthomson@sjcoe.net)		

Public Information Office

Ratto, Jacqueline.....	Public Information Officer.....	468-4937
(jratto@sjcoe.net)		FAX: 468-4987

SJCOE Productions

Jardine, Carlin Producer 468-9166
(cjardine@sjcoe.net) FAX: 468-4987

County Operated Schools and Programs

Education Service Center • 2707 Transworld Drive • 468-4847 • FAX: 468-9051

Mousalimas, James..... Assistant Superintendent 468-9107
(jmousalimas@sjcoe.net) FAX: 468-4951
Fry, Kelly Executive Assistant 468-9107
(kfry@sjcoe.net)

Alternative Education Programs

FAX: 468-4984

Cuaresma, Janine Director II468-9111
(jcuaresma@sjcoe.net)
Frink, Wendy Director II468-9111
(wfrink@sjcoe.net)
Kleinert, Chris Director II468-9111
(ckleinert@sjcoe.net)
Nickols, Deb Director II468-9111
(dnickols@sjcoe.net)

Expulsion/Interdistrict Appeals

Mousalimas, James..... Assistant Superintendent..... 468-9107
(jmousalimas@sjcoe.net) FAX: 468-4951

Foster Youth/Homeless Youth Services

Yost, Mark..... Director I 468-9104
(myost@sjcoe.net) FAX: 468-4984

Outdoor Education

FAX: 468-4984

Randrup, Dan Coordinator IV 468-4809
(drandrup@sjcoe.net)
Bahr, Gregory Coordinator II650-747-0139
(gbahr@sjcoe.net)

Regional Occupational Centers/Programs

FAX: 468-9173

Martin, Doug Director II 468-9005
(dmartin@sjcoe.net)

Jansen, Julie..... Program Manager I 468-9105
(jjansen@sjcoe.net)

Simonich, Don Consultant..... 468-9003
(dsimonich@sjcoe.net)

Student Services

Gonzales, Elsa Director I 468-9144
(elgonzales@sjcoe.net) FAX: 468-9051

Technology/one.Resource

Gibbs, Randy..... Coordinator II 468-9093
(rgibbs@sjcoe.net) FAX: 468-4916

WorkStart YES*/Youthbuild San Joaquin

Goulart, Sheilah..... Coordinator IV 468-9246
(sgoulart@sjcoe.net) FAX: 468-4862

Educational Services Curriculum & Instruction

Education Service Center • 2707 Transworld Drive • 468-4856 • FAX: 468-9232

Dei Rossi, Gary Assistant Superintendent 468-9027
(gdeirossi@sjcoe.net) FAX: 468-9232

Hodgson, Janesse..... Executive Assistant 468-9027
(jhodgson@sjcoe.net)

Advancement Via Individual Determination (AVID)

FAX: 468-9232

Badovinac, Michele Coordinator IV 468-9189
(mbadovinac@sjcoe.net)

Lotti, Anna..... Coordinator I 468-9189
(alotti@sjcoe.net)

Assessment Projects

Carroll, Paula..... Director 468-9261
(pcarroll@sjcoe.net) FAX: 468-9263

CA Preschool Instructional Network (CPIN)

FAX: 468-4931

Ott, Kimberly..... Regional Lead/Coordinator 468-4813
(kott@sjcoe.net)

Downs-Stroh, Katy..... Coordinator I 468-5983
(kdownsstroh@sjcoe.net)

Silveira, Stacie..... Coordinator I 468-9295
(ssilveira@sjcoe.net)

Community Involvement

Wickham, Veray..... Project Liaison I 468-9021
(vwickham@sjcoe.net) FAX: 468-9232

Comprehensive Health

FAX: 468-4955

Coburn, Sheri Director..... 468-4960
(scoburn@sjcoe.net)

Burrueal, Marlene Project Liaison I 468-9288
(mburrueal@sjcoe.net)

Estes, Corrie..... Coordinator IV 468-9167
(cestes@sjcoe.net)

Hana, Nora Coordinator II 468-9089
(nhana@sjcoe.net)

Orr, Robin Coordinator IV 468-9296
(rorr@sjcoe.net)

Early Childhood Education

FAX: 468-4931

Baiocchi, Jamie Director 468-9031
(jbaiocchi@sjcoe.net)

Denero, Valerie..... Program Manager I 468-4808
(vdenero@sjcoe.net)

Long, Cathy Project Liaison I 468-5979
(calong@sjcoe.net)

Porter, Nicole Program Manager I 468-4855
 (nporter@sjcoe.net)

Speaks, Dawn Program Manager I 468-9198
 (dspeaks@sjcoe.net)

Tollini, Jaclyn Project Liaison I 953-2113
 (jtollini@sjcoe.net)

Equity-Williams Case Settlement

Cicolani, Rhonda Director 468-9082
 (rcicolani@sjcoe.net) FAX: 468-9232

Instructional Technology

Engelhardt, Bill Director 468-4883
 (bengelhardt@sjcoe.net) FAX: 468-9124

Language Arts

Hatanaka, Jill Coordinator II 953-2124
 (jhatanaka@sjcoe.net) FAX: 468-9232

Mathematics

FAX: 468-9232

Singh, Satinder Director 468-9177
 (ssingh@sjcoe.net)

Williams, Debbie Coordinator II 468-5986
 (dwilliams@sjcoe.net)

Migrant Education

FAX: 468-4890

Salazar-Huerta, Margaret Director III 468-9200
 (msalazarhuerta@sjcoe.net)

Ramos, Veronica Director II 468-9223
 (vramos@sjcoe.net)

Aguilar, Roberto Program Manager I (Parents) 468-9224
 (raguilar@sjcoe.net)

Fernandez, Florence Coordinator II (Banta, Escalon, Tracy) 468-9074
 (ffernandez@sjcoe.net)

Gutierrez, Jorge Coordinator II (Linden, New Hope, Ripon) 468-9940
 (jgutierrez@sjcoe.net)

Maciel, Jose..... Coordinator II (Stockton)..... 933-7345 x2750
(jmaciel@sjcoe.net)

Mendoza-Sanchez, Javier Program Manager I (Stockton)..... 933-7345 x 7946
(jmendozasanchez@sjcoe.net)

Nunez, Manuel Coordinator II (Leadership)..... 468-9291
(mnunez@sjcoe.net)

Ortiz, Olivia Program Manager I (Contra Costa/Health) 468-9209
(oortiz@sjcoe.net)

Puga, Lupe Coordinator II (Lodi)..... 334-5436
(lpuga@sjcoe.net)

Raya, Joaquin..... Program Manager I (Ident. & Recruitment)..... 468-9219
(jraya@sjcoe.net)

Reyna, Joel..... Program Manager I (Staff Dev.) 468-9220
(jreyna@sjcoe.net)

Ruiz, Sergio Project Liaison I (Out of School Youth) 468-9203
(srui@sjcoe.net)

Sandoval, Aracely..... Coordinator II (Manteca)..... 468-4741
(asandoval@sjcoe.net)

Valdez, Helen Project Liaison I (Lodi/Harney Lane)..... 334-5347
(hvaldez@sjcoe.net)

Multilingual Education

FAX: 468-9268

Sosa-Kropp, Olivia..... Director 468-4865
(ososa@sjcoe.net)

Condit, Mark Teacher on Special Assignment..... 468-5980
(mcondit@sjcoe.net)

Duong, Annie Coordinator II 468-5958
(aduong@sjcoe.net)

Linn-Nieves, Karen Coordinator II 468-9023
(klinnieves@sjcoe.net)

Reading Implementation Center

FAX: 468-9232

Hancock, Ellen..... Director 468-4967
(ehancock@sjcoe.net)

Gonsalves, Kathleen Coordinator II 468-9084
(kagonsalves@sjcoe.net)

Regional System of District & School Support

FAX: 953-2142

Vidal, Charles..... Director..... 468-9056
(cvidal@sjcoe.net)

Davis, Jennifer.....Program Manager I..... 468-9056
(jdavis@sjcoe.net)

Glusing, Sally.....Program Manager I..... 953-2127
(sglusing@sjcoe.net)

Seaton, Shela.....Coordinator II..... 468-9056
(sseaton@sjcoe.net)

Reading First Regional Technical Assistance Center (RTAC)

Tate, Connie.....Director..... 468-4868
(ctate@sjcoe.net) FAX: 468-9232

Science & Special Projects

FAX: 468-9170

Wilson, Judi.....Director..... 468-4880
(jwilson@sjcoe.net)

Anderson, Stephanie.....Science Educator..... 468-4880
(sanderson@sjcoe.net)

Bock, Connie.....Science Educator..... 468-4880
(cbock@sjcoe.net)

Gardner, Paul.....Coordinator II..... 468-4880
(pgardner@sjcoe.net)

Oliver, Connie.....Science Educator..... 468-4880
(coliver@sjcoe.net)

Parker, Cathy.....Science Educator..... 468-4880
(caparker@sjcoe.net)

State/Federal Programs

Condit, Kristen.....Coordinator II..... 953-2123
(kcondit@sjcoe.net) FAX: 468-9232

Student Activities & Events

Davis, Meredith.....Coordinator IV..... 468-4866
(medavis@sjcoe.net) FAX: 468-9232

Student Musical Events

Wendell, Sandra Project Liaison I468-4973
(swendell@sjcoe.net) FAX: 468-9232

Teacher Development

FAX: 468-9124

Kearney, Catherine..... Director III468-9155
(ckearney@sjcoe.net)

Athey, Kathy Coordinator I468-9190
(kathey@sjcoe.net)

Brigham, Carol..... Visiting Educator 639-2373
(cbrigham@sjcoe.net)

Carnahan, Diane Director I468-9057
(dcarnahan@sjcoe.net)

Dunham, Pamela..... Coordinator I468-9116
(pdunham@sjcoe.net)

Gammon, Louise Visiting Educator 649-0570
(lgammon@sjcoe.net)

Hoffman, Carla Visiting Educator468-9157
(choffman@sjcoe.net)

Kelly, Pamela..... Coordinator I468-9192
(pkelly@sjcoe.net)

Loux, Bob Coordinator III468-9059
(bloux@sjcoe.net)

Misaki, Lori Visiting Educator 639-2632
(lmisaki@sjcoe.net)

Stevens-Asplund, Elizabeth.... Visiting Educator468-5906
(estevensasplund@sjcoe.net)

Teachers College of San Joaquin

Kearney, Catherine..... Dean468-9155
(ckearney@sjcoe.net) (www.teachersj.org) FAX: 468-9124

Special Education/SELPA

Education Service Center • 2707 Transworld Drive • FAX: 468-4979

Skeels, Kathleen	Assistant Superintendent	468-4925
(kskeels@sjcoe.net)		
Hamilton, P.J.....	Executive Assistant	468-4925
(pjhamilton@sjcoe.net)		

Special Education Local Plan Area (SELPA)

Andreasen, Kimberly	Management Information Systems	468-9284
(kandreasen@sjcoe.net)		
Brenneise, Sharon.....	Project Administrator	468-9283
(sbrenneise@sjcoe.net)		
Hopman, Debbi.....	Project Administrator	468-5948
(dhopman@sjcoe.net)		
Justice-Brown, Joan	Educational Specialist.....	468-4928
(jjustice@sjcoe.net)		
Kludt, Sandee	Consultant.....	953-2139
(skludt@sjcoe.net)		
Rodriguez, Kris	Educational Specialist.....	468-4928
(krodriguez@sjcoe.net)		
St. George, Margaret.....	Educational Specialist.....	468-4908
(mstgeorge@sjcoe.net)		

Psychological Services

Castillo, Zenon (zcastillo@sjcoe.net)	468-9273
Condon, Chris (ccondon@sjcoe.net)	468-9272
Hernandez, Vincent (vhernandez@sjcoe.net).....	468-9270
Reasoner, Karen (kreasoner@sjcoe.net)	468-5988
Sexton, Michael (msexton@sjcoe.net).....	468-4902

Special Education

General Information: 468-9279 • FAX: 468-4979

Brunni, Brandie.....	Division Director.....	468-9279
(bbrunni@sjcoe.net)		
Beckman, Donna.....	Coordinator, Health Services	823-1383
(dbeckman@sjcoe.net)		
Vervais, Marie.....	Program Support Specialist	468-9279
(mvervais@sjcoe.net)		

Satellite Classes

Athearn, Rolf..... Director II 931-4047
(rathearn@sjcoe.net)

Brown, Barbara..... Director II 823-1383
(bbrown@sjcoe.net)

Garrett, Shelly..... Director I 823-1383
(sgarrett@sjcoe.net)

Johnson, Staci..... Director I 931-4047
(sjohnson@sjcoe.net)

Kern, Bruce..... Director II 931-4047
(bkern@sjcoe.net)

John J. McFall School

1810 Hoyt Lane, Manteca 95336

FAX: 982-5020

Brown, Barbara..... Director II 823-1383
(bbrown@sjcoe.net)

Redwood School

3555 Wilmarth Road, Stockton 95215

FAX: 931-0938

Johnson, Staci..... Director I 931-4047
(sjohnson@sjcoe.net)

San Joaquin County School Districts

Banta Elementary School District
www.bantaesd.org

22375 S. El Rancho Road
Tracy, CA 95304-9413

835-0843 or 835-7406
FAX: 835-9851

Silva, Frank I..... President
Rocha, Daniel..... Member
Weinzapfel, Steve..... Member

Trustees meet the second Thursday of each month

Draa, William..... Superintendent..... 835-0843
(wdraa@sjcoe.net)
Hutton, Carolyn..... Business Manager 835-0843
(chutton@sjcoe.net)

Banta Elementary School

22345 S. El Rancho Road, Tracy 95304-9413
Grades: K-8; Enrollment: 297

835-0171
FAX: 835-0319

Garibaldi, Albert..... Asst. Superintendent/Principal..... 835-0171
(algaribaldi@sjcoe.net)

Escalon Unified School District
www.escalonusd.org

1520 Yosemite Avenue
Escalon, CA 95320

838-3591 or 838-3592 or 462-2346
FAX: 838-6703

Stanton, Janai - Area Four..... President
Caton, Al - Area Two..... Vice-President
Largent, John - Area Five Clerk
Alcorn, Diane - Area Three Member
Brumley, Phil - Area One Member

Trustees meet the first and third Tuesdays of each month

Mantooth, Dave..... Superintendent..... 838-3591
(dmantooth@sjcoe.net)

Frontz, Linda..... Director, Curriculum/Sp. Ed./Categorical 838-8910
FAX: 838-2800

Rodriguez, Sandra..... Director, Administrative Services 838-3591
FAX: 838-6703

Collegeville Elementary School

6701 S. Jack Tone Road, Stockton 95205
Grades: K-5; Enrollment: 140

941-2007
FAX: 462-7126
www.collegevilleschool.org

Amato, Bob (ramato@sjcoe.net) Principal

Dent Elementary School

1998 Yosemite Avenue, Escalon 95320
Grades: K-5; Enrollment: 850

838-7031
FAX: 838-7638
www.dentschool.org

Helsley, Kendra (khelsley@sjcoe.net) Principal

EI Portal Middle School

805 First Street, Escalon 95320
Grades: 6-8; Enrollment: 726

838-7095
FAX: 838-3017
www.elportalmiddle.org

Vos, Mark (mvos@sjcoe.net) Principal

Escalon High School

1528 Yosemite Avenue, Escalon 95320

838-7073

Grades: 9-12; Enrollment: 950

FAX: 838-6127

www.escalonhigh.org

Johannsen, Joel (jjohannsen@sjcoe.net) Principal

Farmington Elementary School

P.O. Box 68, Farmington 95230

886-5344

Grades: K-5; Enrollment 136

FAX: 886-5014

www.farmingtonschool.org

Amato, Bob (ramato@sjcoe.net) Principal

Van Allen Elementary School

21051 E. Highway 120, Escalon 95320

838-2931

Grades: K-5; Enrollment 155

FAX: 838-1832

www.vanallenschool.org

Ferreira, Scott (sferreira@sjcoe.net) Principal

Vista High School

1204 Escalon Avenue, Escalon 95320

838-1450

Grades: 9-12 Continuation; Enrollment: 28

FAX: 838-1922

www.vistahs.org

Frontz, Linda (lfrontz@sjcoe.net) Principal

Jefferson Elementary School District
www.jeffersonschooldistrict.com

1219 Whispering Wind Drive
 Tracy, CA 95377

836-3388
 FAX: 836-2930

Wells, Dan Member
 Jackman, Brian Member
 Wetherell, Todd Member
 Carlson, Pete Member
 Wingo, Debbie Member

Trustees meet the second Tuesday of each month (with exceptions)

Eaton, Dana..... Superintendent..... 836-3388
(deaton@sjcoe.net)
 Merritt, Grace..... Administrative Secretary 836-3388
 (gmerritt@sjcoe.net)
 Maxedon, Mindy Chief Business Officer 836-2766
 (mmaxedon@sjcoe.net)
 Metivier, Carol..... Director, Human Resources..... 836-0232
 (cmetivier@sjcoe.net)
 Raab, Dorothy Director, Special Education..... 839-1842
 (draab@sjcoe.net)

Anthony C. Traina Elementary School

4256 Windsong Drive, Tracy 95377
 Grades: K-7; Enrollment: 800

839-2379
 FAX: 839-2314

Moffitt, Susan (smoffitt@sjcoe.net) Principal

Jefferson School

7500 Linne Road, Tracy 95304
 Grades: 5-8; Enrollment: 375

835-3053
 FAX: 835-4419

Bridges, Jim (jbridges@sjcoe.net) Principal

Monticello Elementary School

1001 Cambridge Place, Tracy 95377

833-9300

Grades: K-4; Enrollment: 450

FAX: 833-9317

Adair, Leslie (ladair@sjcoe.net)..... Principal

Tom Hawkins Elementary School

475 Darlene Lane, Tracy 95377

839-2380

Grades: K-8; Enrollment: 800

FAX: 839-2384

Finton, Paula (pfinton@sjcoe.net)..... Principal

Lammersville Elementary School District
www.lammersvilleschooldistrict.net

300 Legacy Drive

836-7400

Mountain House, CA 95391

FAX: 835-1113

Nielson, Shane President
 Pobert, Ben Clerk
 Cunningham, Chris Member
 Hiramoto, James Member
 Khanna, Atul Member

Trustees meet the fourth Wednesday of each month

Hansen, Dale Superintendent..... 836-7400
(dhansen@sjcoe.net)

Balzarini, Noel Executive Asst. to the Superintendent 836-7400
 (nbalzarini@sjcoe.net)

Burnette, Debbie Asst. Superintendent of Educational Services 836-7400
 (dburnette@sjcoe.net)

Keyser, Alvina Director of Business Services 836-7400
 (alkeyser@sjcoe.net)

Parrott, Kim Director of Special Education 836-7400
 (kparrott@sjcoe.net)

Bethany Elementary School

570 Escuela Drive, Mountain House 95391

836-7250

Grades: K-8; Enrollment: 850

FAX: 839-0446

Buckley, Keri (kbuckley@sjcoe.net) Principal

Lammersville Elementary School

16555 W. Von Sosten Road, Tracy 95304

835-0138

Grades: K-8; Enrollment: 285

FAX: 835-3681

D'Amico, Samy (sdamico@sjcoe.net) Principal

Wicklund Elementary School

300 Legacy Drive, Mountain House 95391

836-7200

Grades: K-8; Enrollment 675

FAX: 830-6746

Vergara, Lem (lvergara@sjcoe.net) Principal

Lincoln Unified School District

www.lusd.net

2010 W. Swain Road
Stockton, CA 95207

953-8700
FAX: 474-7817

Lenz, Susan..... President
Bestolarides, Ted..... Vice-President/Clerk
Canepa, Paul Member
Low, Everett Member
To-Cowell, Van Ha Member
Saiffudiri, Saida Student Member

Trustees meet the second and fourth Wednesdays of each month (with exceptions)

Lowder, Steven A..... Superintendent..... 953-8712
(slowder@lusd.net)

Walker, Lisa Secretary to the Superintendent 953-8712
(lwalker@lusd.net)

Petsche, Janet..... Associate Superintendent, Educ. Services 953-8714
(jpetsche@lusd.net)

Uslan, Tom..... Deputy Supt., Human Resources 953-8790
(tuslan@lusd.net)

Bojé, Lisa..... Associate Supt., Business Services..... 953-8716

DeGanna, Debbie..... Director, State & Federal Programs 953-8735

Deller, Karen..... Director, Business Services 953-8722

Drennen, Kathy..... Director, Child Nutrition Services 953-8655

Fagundes, Suzanne Director, Child Welfare & Attendance..... 953-8727

Hayes, Jennifer..... Director, Early Childhood Education 953-8731

Martinez, Anthony..... Director, Information Technology 953-8779

Tatum, Michele Director, Special Education..... 953-8726

Brookside School

2962 Brookside Road, Stockton 95219

953-8642

Grades: K-8; Enrollment: 785

FAX: 953-8640

Fisher, Linda (lfisher@lusd.net)..... Principal

Claudia Landeen School

4128 Feather River Drive, Stockton 95219

953-8660

Grades: K-8; Enrollment: 680

FAX: 953-8821

Warman, Pam (pwarman@lusd.net) Principal

Colonial Heights School

8135 Balboa Avenue, Stockton 95209
Grades: K-8; Enrollment: 547

953-8783
FAX: 953-8440

Oechel, Maureen (moechel@lUSD.net)..... Principal

Don Riggio School

3110 Brookside Road, Stockton 95219
Grades: K-8; Enrollment: 695

953-8761
FAX: 953-8823

Calonico, Joan (jcalonico@lUSD.net)..... Principal

John McCandless Center

2020 W. Swain Road, Stockton 95207
Grades: 9-12; Enrollment: 72

953-8740
FAX: 476-9168

Kahl, Phyllis (pkahl@lUSD.net)..... Principal

John R. Williams School

2450 Meadow Avenue, Stockton 95207
Grades: K-6; Enrollment: 581

953-8767
FAX: 952-4642

Martin, Nancy (nmartin@lUSD.net)..... Principal

Lincoln Elementary School

818 W. Lincoln Road, Stockton 95207
Grades: K-6; Enrollment: 580

953-8652
FAX: 951-5329

Tatum, Scott (statum@lUSD.net)..... Principal

Lincoln High School

6844 Alexandria Place, Stockton 95207
Grades: 9-12; Enrollment: 2,511

953-8921
FAX: 952-4646

Holmerud, Debbi (dholmerud@lUSD.net)..... Principal

Mable Barron School

6835 Cumberland Place, Stockton 95219

953-8796

Grades: K-8; Enrollment: 742

FAX: 952-5811

Wehrs, Ellen (ewehrs@lusd.net)..... Principal

Sierra Middle School

6776 Alexandria Place, Stockton 95207

953-8748

Grades: 7-8; Enrollment: 568

FAX: 953-8747

Asplund, Terry (tasplund@lusd.net) Principal

Sture Larsson High School

1813 McClellan Way, Stockton 95207

953-8687

Grades: 9-12; Enrollment: 199

FAX: 953-8741

Kahl, Phyllis (pkahl@lusd.net)..... Principal

Tully C. Knoles School

6511 Clarksburg Place, Stockton 95207

953-8775

Grades: PK-8; Enrollment: 717

FAX: 474-2107

Sandstrom, Kelly (ksandstrom@lusd.net)..... Principal

Linden Unified School District
www.sjcoe.net/lusd/do.html

18527 E. Main Street
 Linden, CA 95236

887-3894
 FAX: 887-2250

Machado, Diana - Area One President
 Colombini, Jay - Area Four Vice-President
 Vaccarezza, Marvin - Area Two Clerk
 Nash, Linda - Area Five Member
 Podesta, Ill., Fred - Area Four Member
 Titus, Clay - Area Three Member
 White, Mardy - Area Six Member

Trustees meet the third Wednesday of each month

Estes, Ronald..... Superintendent..... 887-3894
(restes@sjcoe.net)

Hall, Rebecca Assistant Superintendent, Business/Finance..... 887-3894
 (rhall@sjcoe.net)

Steinkamp, Jane Assistant Superintendent, Instruc/Personnel 887-3894
 (jsteinkamp@sjcoe.net)

Griffith, Sheri..... Director of Student Services 931-2192
 (sgriffith@sjcoe.net)

Glenwood Elementary School

2005 N. Alpine Road, Stockton 95215
 Grades: 1-8; Enrollment: 420

931-3229
 FAX: 931-0705

Phillips, Gary (gphillips@sjcoe.net) Principal

Linden Elementary School

18100 E. Front Street, Linden 95236
 Grades: K-4; Enrollment: 493

887-3600
 FAX: 887-2252

Pimentel, Tony (tpimentel@sjcoe.net) Principal

Linden High School

18527 E. Front Street, Linden 95236

887-3073

Grades: 9-12; Enrollment: 783

FAX: 887-3815

Markle, Stephanie (smarkle@sjcoe.net) Principal

Pride High School

100 N. Jack Tone Road, Stockton 95215

942-2695

Grades: 9-12; Enrollment: 69

FAX: 942-2064

Schmidig, Richard (rschmidig@sjcoe.net) Principal

Waterloo School

7007 N. Pezzi Road, Stockton, 95215

931-0818

Grades: 5-8; Enrollment: 395

FAX: 931-2915

McCandless, Michael (mmccandless@sjcoe.net) Principal

Waverly School

3507 Wilmarth Road, Stockton 95215

931-0735

Grades: K-8; Enrollment: 332

FAX: 931-3509

Pettis, Lisa (lpettis@sjcoe.net) Principal

Lodi Unified School District

www.lodiused.net

1305 E. Vine Street
Lodi, CA 95240

331-7000 or 953-8000
FAX: 331-7256

Jones, Richard - Area Three..... President
Young, Calvin - Area Four Vice-President
Bills, Sr., Harvey N. - Area Six..... Clerk
Cassel, Bonnie - Area One..... Member
Davis, Ken - Area Two Member
Nava, Joe - Area Seven..... Member
Thompson, Jeffrey - Area Five Member

Trustees meet the first and third Tuesday of each month

Nichols-Washer, Cathy..... Superintendent..... 331-7010
(cwascher@lodiused.net) FAX: 331-7256

Aebi, Lynn..... Executive Asst. to the Superintendent 331-7010
(laebi@lodiused.net) FAX: 331-7256

Barge, Doug Chief Business Officer 331-7121
(dbarge@lodiused.net) FAX: 331-7142

Douglas, Odie..... Assoc. Supt., K-12 & Ed. Services..... 331-7003
(odouglas@lodiused.net) FAX: 331-7961

Hand, Art..... Asst. Superintendent, Facilities & Planning 331-7219
(ahand@lodiused.net) FAX: 331-7229

Johnston, Barbara Asst. Supt., Secondary Education 331-7005
(bjohnston@lodiused.net) FAX: 331-7031

McKilligan, Mike..... Asst. Supt., Personnel/Empl. Relations 331-7100
(mmckilligan@lodiused.net) FAX: 331-7144

Pennington, Catherine..... Asst. Superintendent, Elementary Education 331-7257
(cpennington@lodiused.net) FAX: 331-7031

Colwell, Steve..... Principal, Adult Ed/ROP Career Center 331-7608
(scolwell@lodiused.net) FAX: 331-7526/7167

Eldridge, Edward Coordinator, Assessment/Research/Eval..... 331-7025
(eeldridge@lodiused.net) FAX: 331-7244

Fong, Maria Controller 331-7127
(mfong@lodiused.net) FAX: 331-7124

Garcia, Carlos..... Director, Transportation..... 331-7169
(cgarcia@lodiused.net) FAX: 331-7821

Garr, Michael Construction Project Manager 331-7218
(mgarr@lodiused.net) FAX: 331-7229

Gire, Bob Coordinator, Child Welfare & Attendance 331-7070
(bgire@lodiused.net) FAX: 331-7031

Gonsalves, Ivie	Coordinator, Special Services.....	331-7075
(igonsalves@lodiused.net)		FAX: 331-7067
Grauman, Elliott.....	Director, Classified Personnel.....	331-7101
(egrauman@lodiused.net)		FAX: 331-7144
Hargis, Carrie	Director, Budgets	331-8075
(chargis@lodiused.net)		FAX: 331-8083
Hayes, Lisa.....	Director, Education Support Services	331-7033
(lhayes@lodiused.net)		FAX: 331-7961
Jefferson, Irvin.....	Coordinator, Community Relations	331-7766
(ljefferson@lodiused.net)		FAX: 331-7280
Johnson, Steven.....	Coordinator, Special Education.....	331-7080
(sjohnson@lodiused.net)		FAX: 331-7084
Koch, Cricket	Director, Purchasing & Warehouse.....	331-7160
(ckoch@lodiused.net)		FAX: 331-8067
Kotowski, Lisa.....	Admin. Dir., Currc./Instruc./Assessment	331-7028
(lkotowski@lodiused.net)		FAX: 331-7981
Munsch, Dale.....	Director, Information Services.....	331-7211
(dmunsch@lodiused.net)		FAX: 331-7039
Saunders, Bill	Coord., Psych. Services/Student Support.....	331-7046
(bsaunders@lodiused.net)		FAX: 331-7084
Slater, Mitch.....	Director, Maintenance & Operations.....	331-7181
(mslater@lodiused.net)		FAX: 331-7632
Sun, Warren	Director, Food Services.....	331-7155
(wsun@lodiused.net)		FAX: 331-7981
vacant.....	Payroll Manager.....	331-7137
(@lodiused.net)		FAX: 331-7124
Vetica, Dawn.....	Director, Elementary Education	331-2153
(dvetica@lodiused.net)		FAX: 331-7031
Wax, David M.	Admin. Director, Student Services/SELPA.....	331-7061
(dwax@lodiused.net)		FAX: 331-7084
Yocum, Gary.....	Facility Planning Manager.....	331-7213
(gyocum@lodiused.net)		FAX: 331-7229
Young, Neil	Prin., Acad. Interventions & Suppl. Instr Prog.....	331-8903
(nyoung@lodiused.net)		FAX: 331-8906

Ansel Adams Elementary School

9275 Glacier Point Drive, Stockton 95212	953-9601
Grades: K-6; Enrollment: 847	FAX: 953-9603

Morone, Patti (pmorone@lodiused.net) Principal

Bear Creek High School

10555 Thornton Road, Stockton 95209
Grades: 9-12; Enrollment: 1,903

331-7234 or 953-8234
FAX: 953-8247

Camp, Daryl (dcamp@lodiUSD.net) Principal

Beckman Elementary School

2201 Scarborough Drive, Lodi 95240
Grades: K-6; Enrollment: 645

331-7410
FAX: 331-8301

Vacant..... Principal

Christa McAuliffe Middle School

3880 Iron Canyon Circle, Stockton 95209
Grades: 7-8; Enrollment: 889

953-9431
FAX: 953-9430

Malandro, Randy (rmalandro@lodiUSD.net) Principal

Clairmont Elementary School

8282 Le Mans, Stockton 95210
Grades: K-6; Enrollment: 463

953-8267
FAX: 953-8276

Hitchcock, Susan (shitchcock@lodiUSD.net) Principal

Clements Elementary School

19051 E. Highway 88, P.O. Box 743, Clements 95227
Grades: K-1; Enrollment: 79

331-7300 or 759-3425
FAX: 759-9105

Anderson, Virginia (vanderson@lodiUSD.net) Principal

Clyde W. Needham School

420 S. Pleasant, Lodi 95240
Grades: 4-6; Enrollment: 290

331-7375
FAX: 331-7483

Rivas, Carol (crivas@lodiUSD.net) Principal

Creekside Elementary School

2515 Estate Drive, Stockton 95209
Grades: K-6; Enrollment: 668

331-7285 or 953-8285
FAX: 953-8296

Krueger, Brandon (bkrueger@lodiUSD.net)..... Principal

Davis Elementary School

5224 E. Morada Lane, Stockton 95212
Grades: K-6; Enrollment: 355

331-7301 or 953-8301
FAX: 953-8304

Shepherd, Tim (tshepherd@lodiUSD.net)..... Principal

Delta Sierra Middle School

2255 Wagner Heights Road, Stockton 95209
Grades: 7-8; Enrollment: 541

331-7510 or 953-8510
FAX: 953-8139

Takemoto, Steve (stakemoto@lodiUSD.net)..... Principal

Dorothy J. Mahin School

5080 Armstrong Road, Lodi 95240
Grades: TMR; Enrollment: 16

331-7366
FAX: 331-7561

Johnson, Steven (sjohnson@lodiUSD.net)..... Coordinator

Elkhorn School

10505 N. Davis Road, Stockton 95209
Grades: 4-8; Enrollment: 278

331-7330 or 953-8330
FAX: 953-8319

McGregor, Scott (smcgregor@lodiUSD.net)..... Principal

Ellerth E. Larson Elementary School

2375 Giannoni Way, Lodi 95242
Grades: K-6; Enrollment: 690

331-8391
FAX: 331-8375

Nilmeyer, Cheryl (cnilmeyer@lodiUSD.net)..... Principal

Erma B. Reese Elementary School

1800 W. Elm Street, Lodi 95242
Grades: K-6; Enrollment: 647

331-7424 or 953-8424
FAX: 331-7431

Bordner, Celeste (cbordner@lodiUSD.net)..... Principal

George Lincoln Mosher Elementary School

3220 Buddy Holly Drive, Stockton 95212
Grades: K-6; Enrollment: 551

953-9298
FAX: 953-3218

Brown, Harold (hbrown@lodiUSD.net) Principal

George Washington Elementary School

831 W. Lockeford Street, Lodi 95240
Grades: K-6; Enrollment: 492

331-7451 or 953-8451
FAX: 331-7320

Denman, Linda (lidenman@lodiUSD.net) Principal

Henderson Community Day School

13451 N. Extension Road, Lodi 95242
Grades: 7-8; Enrollment 133

331-7331
FAX: 331-7601

Dosty, Allen (adosty@lodiUSD.net) Principal

Heritage Primary Elementary School

509 Eden Street, Lodi 95240
Grades: K-3; Enrollment: 457

331-7334 or 953-8334
FAX: 331-7341

Cervantes, Maria (mcervantes@lodiUSD.net) Principal

Houston Elementary School

4600 E. Acampo Road, Acampo 95220
Grades: K-8; Enrollment: 374

331-7475 or 953-8475
FAX: 331-7405

Lyll, Jann (jlyll@lodiUSD.net) Principal

Independence School

North Campus/Liberty High
660 W. Walnut Street, Lodi 95240
Grades: 9-12; Enrollment: 220

331-8364
FAX: 331-7624

South Campus/Plaza Robles
9434 Thornton Road, Stockton 95209
Grades: 9-12; Enrollment: 247

953-8364
FAX: 953-9484

Wall, Roberta (rwall@lodiUSD.net) Principal

John Muir Elementary School

2303 Whistler Way, Stockton 95209
Grades: K-6; Enrollment: 690

331-7312 or 953-8106
FAX: 953-8110

Medford, Virginia (vmedford@lodiUSD.net) Principal

Julia Morgan Elementary School

3777 A.G. Spanos Blvd., Stockton 95209
Grades: K-6; Enrollment: 722

953-8453
FAX: 953-8090

Glassco, Jan (jglassco@lodiUSD.net) Principal

Lakewood Elementary School

1100 N. Ham Lane, Lodi 95242
Grades: K-6; Enrollment: 411

331-7348 or 953-8348
FAX: 331-7351

Spaulding, Bruce (bspaulding@lodiUSD.net) Principal

Lawrence Elementary School

721 Calaveras Street, Lodi 95240
Grades: K-6; Enrollment: 536

331-7356 or 953-8356
FAX: 331-7357

Vacant..... Principal

Leroy Nichols Elementary School

1301 S. Crescent Avenue, Lodi 95240
Grades: K-6; Enrollment: 413

331-7378 or 953-8378
FAX: 331-7380

Douglas, Elaine (edouglas@lodiUSD.net) Principal

Liberty High School

660 W. Walnut Street, Lodi 95240
Grades: Continuation; Enrollment: 158

331-7633 or 953-8633
FAX: 331-7624

Rivas, Robert (rrivas@lodiUSD.net) Principal

Lincoln Technical Academy

542 E. Pine Street, Lodi 95240
Grades: Adult; Enrollment: 3,295

331-7617
FAX: 331-7167

Colwell, Steve (scolwell@lodiUSD.net)..... Principal

Live Oak Elementary School

5099 E. Bear Creek Road, Lodi 95240
Grades: K-6; Enrollment: 261

331-7370 or 953-8370
FAX: 331-7302

Varni, Marianne (mvarni@lodiUSD.net) Principal

Lockeford Elementary School

19456 N. Tully Road, Lockeford 95237
Grades: 1-6; Enrollment: 255

331-7214 or 727-5084
FAX: 727-5802

Anderson, Virginia (vanderson@lodiUSD.net) Principal

Lodi High School

3 Pacific Avenue, Lodi 95242
Grades: 9-12; Enrollment: 2,005

331-7815 or 953-8659
FAX: 331-7779

Atterberry, William (batterberry@lodiUSD.net) Principal

Lodi Middle School

945 S. Ham Lane, Lodi 95242
Grades: 7-8; Enrollment: 923

331-7544 or 953-8544
FAX: 331-7550

Sanchez, Marco (msanchez@lodiUSD.net) Principal

Lois E. Borchardt Elementary School

375 Culbertson Drive, Lodi 95240
Grades: K-6; Enrollment: 817

331-8212
FAX: 331-8241

Morehead, Janis (jmorehead@lodiUSD.net) Principal

Manlio Silva Elementary School

6250 Scott Creek Drive, Stockton 95219
Grades: K-6; Enrollment: 775

953-9302
FAX: 953-9309

Faith, Dan (dfaith@lodiUSD.net) Principal

Middle College High School

San Joaquin Delta College - Holt 208
5151 Pacific Avenue, Stockton 95207-5790
Grades: 9-12; Enrollment: 245

954-5790
FAX: 954-5875

Balian, Sherry (sbalian@lodiUSD.net) Principal

Millswood Middle School

233 N. Mills Avenue, Lodi 95242 331-8332
Grades: 7-8; Enrollment: 772 FAX: 331-8347

Perez, Sheree (sperez@lodiUSD.net) Principal

Morada Middle School

5001 E. Eastview Drive, Stockton 95212 331-7490 or 953-8490
Grades: 7-8; Enrollment: 862 FAX: 953-8502

Perez, Janet (jperez@lodiUSD.net) Principal

Oakwood Elementary School

1315 Woodcreek Way, Stockton 95209 331-7392 or 953-8392
Grades: K-6; Enrollment: 570 FAX: 953-8004

Shigematsu, Denice (dshigematsu@lodiUSD.net) Principal

Parklane Elementary School

8405 Tam O'Shanter Drive, Stockton 95210 331-7409 or 953-8410
Grades: K-3; Enrollment: 553 FAX: 953-8084

Purkins, Princetta (ppurkins@lodiUSD.net) Principal

Plaza Robles High School

9434 Thornton Road, Stockton 95209 331-7283 or 953-8068
Grades: Continuation; Enrollment: 152 FAX: 953-8064

Toledo, Bill (btoledo@lodiUSD.net) Principal

Podesta Ranch Elementary School

9950 Windmill Park Drive, Stockton 95209 953-8543
Grades: K-6; Enrollment: 294 FAX: 953-8547

Kirby, Pierre (pkirby@lodiUSD.net) Principal

Ronald E. McNair High School

9550 Ronald E. McNair Way, Stockton 95210 953-9245
Grades: 9-12; Enrollment: 1,965 FAX: 953-3213

Davis, Jim (jdavis@lodiUSD.net) Principal

School Readiness/Preschool Services Child Development Programs

701 Calaveras Street, Lodi 95240
Grades: P-6; Enrollment: 110

331-7252 or 953-8252
FAX: 331-7319

Costamagna, Florence (fcostsmagna@lodiUSD.net) Director
Murray, Judy (jmurray@lodiUSD.net) Assistant Director

Sutherland Elementary School

550 Spring River Circle Stockton 95210
Grades: 4-6; Enrollment: 373

953-8999
FAX: 953-8031

Gerrity, Allison (agerrity@lodiUSD.net) Principal

Tokay Colony Elementary School

13520 E. Live Oak Road, Lodi 95240
Grades: K-6; Enrollment: 130

331-7438 or 953-8438
FAX: 953-3200

Villafana, Juan Carlos (jvillafana@lodiUSD.net) Principal

Tokay High School

1111 W. Century Boulevard, Lodi 95240
Grades: 9-12; Enrollment: 1,896

331-7990 or 953-8635
FAX: 331-7168

Sandstrom, Erik (esandstrom@lodiUSD.net) Principal

Victor Elementary School

17670 Bruella Road, Post Office Box L, Victor 95253
Grades: K-6; Enrollment: 238

331-7441 or 953-8441
FAX: 331-7530

Villafana, Juan Carlos (jvillafana@lodiUSD.net) Principal

Vinewood Elementary School

1600 W. Tokay Street, Lodi 95242
Grades: K-6; enrollment: 554

331-7445 or 953-8445
FAX: 331-7447

Smith, Kitsy (ksmith@lodiUSD.net) Principal

Wagner-Holt Elementary School

8778 Brattle Place, Stockton 95209
Grades: K-6 ; Enrollment: 557

953-8407
FAX: 953-8403

Rogers, Janet (jrogers@lodiUSD.net) Principal

Westwood Elementary School

9444 Caywood Drive, Stockton 95210
Grades: K-6 ; Enrollment: 584

953-8333
FAX: 953-8337

Whelply-Miller, Mary (mwmiller@lodiUSD.net) Principal

Woodbridge Elementary School

1290 Lilac Street, Lodi 95242
Grades: K-8; Enrollment: 447

331-8160
FAX: 331-7580

Kirilov, John (jkirilov@lodiUSD.net)..... Principal

Manteca Unified School District

www.mantecausd.net

P.O. Box 32, Manteca, CA 95336
2271 W. Louise Avenue, Manteca, CA 95337

825-3200

Seelye, Michael - Area Three President
King, Wendy - Area Five Vice-President
Moore, Evelyn - Area Five Clerk
Gebhardt, Vern - Area Five Member
Holiday, Rex A. - Area One Member
Medeiros, Manuel - Area Two Member
Teicheira, Nancy - Area Four Member

Trustees meet second and fourth Tuesdays (with exceptions)

Messer, Jason **Superintendent**..... **858-0729**
(jmesser@musd.net) FAX: 825-3233
Halseth, Donald Assistant Superintendent 858-0742
(dhalseth@musd.net) FAX: 825-3292 (General) • 825-3238 (Confidential)
Breitenbucher, Jacqui Sr. Director, Business Services/CBO 858-0728
(jbreitenbucher@musd.net) FAX: 825-3295
Goatcher, Roger Sr. Director, Student Svcs. & Special Educ..... 858-0837
(rgoatcher@musd.net)
Houck, Debbie Director I, Child Welfare & Attendance 858-0762
(dhouck@musd.net)
Meeker, Cheryl Sr. Director, Elementary Education 858-0702
(cmeeker@musd.net)
Roberts, Frances Director I, Compensatory Education 858-0797
(froberts@musd.net)
Thibodeau, Caroline Director of Health Services 858-0780
(cthibodeau@musd.net) FAX: 825-3283

August Knodt Elementary School

3939 EWS Woods Boulevard, Stockton 95206
Grades: K-8; Enrollment: 777

938-6200
FAX: 938-6219

Forte, Debbie (dforte@musd.net) Principal

Brock Elliott Elementary School

1110 Stonum Lane, Manteca 95337
Grades: K-8; Enrollment: 731

858-7260
FAX: 825-3332

Ruger, Debbie (druger@musd.net) Principal

Calla High School

130 S. Austin Road, Manteca 95336 858-7230
Grades: 9-12 Continuation; Enrollment: 220 FAX: 858-7232

Crouse, Kathy (kcrouse@musd.net) Principal

East Union High School

1700 N. Union Road, Manteca 95336 858-7270
Grades: 9-12; Enrollment: 1,607 FAX: 825-3148

Alba, John V. (jalba@musd.net) Principal

French Camp Elementary School

241 E. Fourth Street, French Camp 95231 938-6370
Grades: K-8; Enrollment: 618 FAX: 234-7143

Balestreri, Joanne (jbalestreri@musd.net) Principal

George McParland Elementary School

1601 Northgate Drive, Manteca 95336 858-7290
Grades: 3-8; Enrollment: 1,121 (Including Annex) FAX: 825-3394

Borgeson, Dale (dborgeson@musd.net) Principal

George McParland Elementary School Annex

1370 London Avenue, Manteca 95336 825-4281
Grades: K-2; Enrollment: N/A FAX: 825-5098

Borgeson, Dale (dborgeson@musd.net) Principal

George Y. Komure Elementary School

2121 Henry Long Boulevard, Stockton 95206 234-4812
Grades: K-8; Enrollment: 1,011 FAX: 234-8763

Allen, Jo Ella (jallen@musd.net) Principal

Golden West Elementary School

1031 N. Main Street, Manteca 95336 858-7300
Grades: K-8; Enrollment: 662 FAX: 825-3343

Gates, Sheri (sgates@musd.net) Principal

Great Valley Elementary School

4223 McDougald Boulevard, Stockton 95206
Grades: K-5; Enrollment: 1,219 (including Annex)

938-6300
FAX: 234-1062

Boutte, Patricia (pboutte@musd.net) Principal

Great Valley Elementary School Annex

4550 Star Way, Stockton 95206
Grades: 6-8

938-6310
FAX: 234-6715

Boutte, Patricia (pboutte@musd.net) Principal

Joseph Widmer, Jr. Elementary School

751 Stonebridge Lane, Lathrop 95330
Grades: K-8; Enrollment: 928

858-0650
FAX: 858-4414

Turner-Kelley, Suzan (sturner@musd.net) Principal

Joshua Cowell Elementary School

740 Pestana Avenue, Manteca 95336
Grades: K-8; Enrollment: 530

858-7310
FAX: 825-3314

Myrick, Harriett (hmyrick@musd.net) Principal

Lathrop Elementary School

15851 S. Fifth Street, Lathrop 95330
Grades: 3-8; Enrollment: 1,010

858-7250
FAX: 858-3056

Silveira, David (dsilveira@musd.net) Principal

Lathrop High School

647 W. Lathrop Road, Lathrop 95330
Grades: 9-11; Enrollment: 482

938-6350
FAX: 234-2904

Chamberlain, David C. (dchamberlain@musd.net) Principal

Lincoln Elementary School

750 E. Yosemite Avenue, Manteca 95336
Grades: K-8; Enrollment: 682

825-3380
FAX: 825-3387

Arellano, Sonya (sarellano@musd.net)..... Principal

Lindbergh Adult School

311 E. North Street, Manteca 95336
Grades: Adult; Enrollment: N/A

825-3100
FAX: 825-3110

Medeiros, Diane (dmedeiros@musd.net)..... Principal

Manteca Day School

680 Mikesell Street, Manteca 95336
Grades: K-12; Enrollment: 80

239-6282
FAX: 239-3863

Bhatti, Rupinder (rbhatti@musd.net)..... Principal

Manteca High School

450 E. Yosemite Avenue, Manteca 95336
Grades: 9-12; Enrollment: 1,623

825-3150
FAX: 825-3158

McCreath, Doug (dmccreath@musd.net)..... Principal

Mossdale Elementary School

455 Brookhurst Boulevard, Lathrop 95330
Grades: K-8; Enrollment: 656

938-6285
FAX: 234-7494

Sanders, Susan (ssanders@musd.net) Principal

Neil Hafley Elementary School

849 Northgate Drive, Manteca 95336
Grades: K-8; Enrollment: 781

858-7215
FAX: 825-3354

Anderson, J. Steven (standerson@musd.net) Principal

New Haven Elementary School

14600 S. Austin Road, Manteca 95336
Grades: K-8; Enrollment: 594

825-3400
FAX: 825-3403

O'Leary, David (doleary@musd.net) Principal

New Vision Educational Center

4726 McCuen Avenue, Stockton 95206
Grades: 9-12; Enrollment: 144

938-6225
FAX: 982-4033

Peters, Katie (kpeters@musd.net) Principal

Nile Garden Elementary School

5700 E. Nile Road, Manteca 95337
Grades: K-8; Enrollment: 509

825-3410
FAX: 825-3412

Noceti, Deborah (dnoceti@musd.net) Principal

Sequoia Elementary School

710 Martha Street, Manteca 95337
Grades: K, 3-8; Enrollment: 806

858-7440
FAX: 825-3445

Herrin, Lisa (lherrin@musd.net) Principal

Shasta Elementary School

751 E. Edison Street, Manteca 95336
Grades: K-8; Enrollment: 748

858-7400
FAX: 825-3453

Greene, Audrey (agreene@musd.net) Principal

Sierra High School

1700 Thomas Street, Manteca 95337
Grades: 9-12; Enrollment: 1,393

858-7410
FAX: 825-3198

Pearson, Susan (spearson@musd.net) Principal

Stella Brockman Elementary School

763 Silverado Drive, Manteca 95337
Grades: K-8; Enrollment: 834

858-7200
FAX: 858-7202

Vacant..... Principal

Veritas Elementary School

1600 Pagola Avenue, Manteca 95337
Grades: K-8; Enrollment: 362

858-7390
FAX: 824-9449

Crawford, Tracie L. (tcrawford@musd.net) Principal

Walter Woodward Elementary School

575 Tannehill Drive, Manteca 95337
Grades: K-8; Enrollment: 960

858-7430
FAX: 824-8783

Jamero, Sherrie (sjamero@musd.net) Principal

Weston Ranch High School

4606 McCuen Avenue, Stockton 95206
Grades: 9-12; Enrollment: 1,357

938-6245
FAX: 982-9172

Schmiedt, Clara (cschmiedt@musd.net) Principal

New Hope Elementary School District
www.sjcoe.org/ourschools/files/08SARCNewHopeESDNewHopeES.pdf

Mailing: P. O. Box 238, Thornton, CA 95686 794-2376
 26675 N. Sacramento Boulevard, Thornton, CA 95686 FAX: 794-2230

Clark, Leonard President
 Torres, Jose Vice-President
 Springmeyer, Jane Clerk

Trustees meet on the second Monday of each month

Oien, Joanne Superintendent 794-2376
(joien@sjcoe.net)

New Hope Elementary School

P. O. Box 238, Thornton 95686 (mailing) 794-2376
 26675 N. Sacramento Boulevard, Thornton 95686 FAX: 794-2230
 Grades: K-8; Enrollment: 200

Oien, Joanne (joien@sjcoe.net) Principal

New Jerusalem Elementary School District
www.njelementary.com

31400 S. Koster Road
 Tracy, CA 95304

835-2597
 FAX: 835-2613

Petz, Chuck President
 Bogetti, Stephen Clerk
 Koster, William Member

Trustees meet the second Tuesday of each month

Thoming, David..... Superintendent/Director, Charter Schools 830-6789
(dthoming@njes.org)

McHugh, Lisa..... District Business Manager 835-2597
 (lmchugh@sjcoe.net)

Payne, Steven Special Education Coordinator 835-2597
 (spayne@sjcoe.net)

New Jerusalem Elementary School

31400 S. Koster Road, Tracy 95304
 Grades: K-8; Enrollment: 247

835-2597
 FAX: 835-2613

Payne, Steve (spayne@sjcoe.net) Principal

Oak View Union Elementary School District
www.edserv.sjcoe.net/oakview

7474 E. Collier Road
 Acampo, CA 95220

368-0636
 FAX: 368-9319

Pehl, Carol..... President
 Rausser, Greg Clerk
 Huft, Mark..... Member
 Pearson, Jeanne Member
 Seifert, Stanley Member

Trustees meet the third Thursday of each month

Scully, Michael Superintendent/Principal 368-0636
(mscully@sjcoe.net)
 Saul, Carol..... Business Manager 368-0636
 (csaul@sjcoe.net)

Oak View Elementary School

7474 E. Collier Road, Acampo 95220
 Grades: K-8; Enrollment: 394

368-0636
 FAX: 368-9319

Anderson, Deborah(danderson@sjcoe.net) Vice-Principal

Ripon Unified School District

www.riponusd.net

304 N. Acacia Avenue
Ripon, CA 95366

599-2131
FAX: 599-6271

Stewart, Larry - Area Three President
Tyhurst, Ernie - Area Two Vice-President
Deliddo, Jack - Area Five..... Clerk
Fisher, Mike - Area Four Member
Parks, Donna - Area One Member

Trustees meet the second Monday of each month

Nan, Louise **Superintendent**..... **599-2131**
(Inan@sjcoe.net)

Coleman, Kathryn..... Director, Curriculum & Categorical Programs 599-2131
(kcoleman@sjcoe.net)

Taylor, Camille Director, Student Support Services 599-2131
(ctaylor@sjcoe.net) FAX: 794-2376

Colony Oak Elementary School

22241 S. Murphy Road, Ripon 95366
Grades: K-8; Enrollment: 459

599-7145
FAX: 599-2772

Eheler, Sylvia (seheler@sjcoe.net) Principal

Park View Elementary School

751 Cindy Drive, Ripon 95366
Grades: K-3; Enrollment: 265

599-1882
FAX: 599-1886

Ogden, Mona (mogden@sjcoe.net) Principal

Ripon Elementary School

509 W. Main Street, Ripon 95366..... 599-4225
Grades: K-8; Enrollment: 453 FAX: 599-8725

Larson, Mike (mlarson@sjcoe.net)..... Principal

Ripon High School

301 N. Acacia Avenue, Ripon 95366
Grades: 9-12; Enrollment: 947

599-4287
FAX: 599-6410

Morrow, Lance (lmorrow@sjcoe.net)..... Principal

Ripona Elementary School

415 E. Oregon Street, Ripon 95366
Grades: K-8; Enrollment: 458

599-4104
FAX: 599-1886

Council, Warren (wcouncil@sjcoe.net)..... Principal

Weston Elementary School

1660 Stanley Drive, Ripon 95366
Grades: K-8; Enrollment: 469

599-7113
FAX: 599-4063

Feria, Lisa (lfereria@sjcoe.net) Principal

San Joaquin Delta Community College District

www.deltacollege.edu

5151 Pacific Avenue
Stockton, CA 95207

954-5151
FAX: 954-5644

Castellanos, Steve - Area Five (No.San Joaq. Co., Galt, Rio Vista, Calaveras) .. President
 Rivera, Janet - Area Three (Rural Stockton)..... Vice-President
 Brown, Theresa- Area Six (Tracy) Clerk
 Cox, Mary Ann - Area Two (North Stockton)..... Member
 Khan, Taj - Area Four (Lodi) Member
 Simas, Ted - Area Seven (Manteca, Escalon) Member
 Stebbins, C. Jennet - Area One (South Stockton)..... Member

Trustees meet the first and third Tuesdays of each month

Rodriguez, Raul Superintendent/President 954-5018
(rrodriguez@deltacollege.edu)
 Hart, Kathy..... Asst. Supt./Vice-President, Instruc. Svcs..... 954-5047
 (khart@deltacollege.edu)
 Brown, Vince Vice-President of Human Res. & Empl Rel..... 954-5012
 (vbrown@deltacollege.edu)
 Hill, Hazel Dean, Workforce & Economic Development..... 954-5093
 (hhill@deltacollege.edu)
 Jennings, Charles..... Dean, General Education & Transfer 954-5631
 (cjennings@deltacollege.edu)
 Stephens, Jon C. Vice-President, Business Services 954-5022
 (jstephens@deltacollege.edu)
 Walton, Trudy Vice-President, Student Services 954-5632
 (twalton@deltacollege.edu)
 Wetstein, Matt..... Dean, Planning, Research, & Regional Educ 954-5039
 (mwetstein@deltacollege.edu)

Stockton Unified School District

www.stockton.k12.ca.us

701 N. Madison Street
Stockton, CA 95202

933-7000
FAX: 933-7071

Castillo, Daniel - Area Seven..... President
 Morales, Jose - Area Three Vice-President
 Allen, Gloria - Area One..... Member
 Boardman, Colleen - Area Four..... Member
 McCarthy, Beverly Fitch - Area Five Member
 Ramirez, Sal - Area Two..... Member
 Ross, William (Bill) Area Six Member

Trustees meet the second and fourth Tuesday of each month

Amato, Anthony Superintendent..... 933-7070
(aamato@stockton.k12.ca.us)

Luna, Linda..... Asst. Supt., Curric./Instruction933-7030 x2311
 (lluna@stockton.k12.ca.us) FAX: 933-7031

Vacant..... Asst. Supt., Human Resources..... 933-7065 x2101
 (@stockton.k12.ca.us) FAX: 933-7071

Penn, Julie..... Interim Asst. Supt. of Student Services..... 933-7130 x2560
 (jpenn@stockton.k12.ca.us) FAX: 933-7131

Alimbini, Dee Administrator, CWA..... 933-7380 x1351
 (dalimbini@stockton.k12.ca.us) FAX: 933-7381

Alvarez, Jeri..... Acting Admin., Psychological Svcs. 933-7135 x2513
 (jalvarez@stockton.k12.ca.us) FAX: 933-7136

Asuncion, Gayle Administrator, Health Services..... 933-7060 x2392
 (gasuncion@stockton.k12.ca.us) FAX: 933-7061

Breakfield, Steve Director, Facilities Planning..... 933-7045 x2341
 (sbreakfield@stockton.k12.ca.us) FAX: 933-7046

Cervantes, Lily..... Executive Director, Legal Affairs 933-7065 x2130
 (lcervantes@stockton.k12.ca.us) FAX: 465-1094

Costa, Ivan Purchasing Manager..... 933-7095 x2249
 (icosta@stockton.k12.ca.us) FAX: 933-7096

Goehring, Roscoe..... Safety Coordinator933-7110 x2553
 (rghoehring@stockton.k12.ca.us) FAX: 465-2056

Greiner, Christie..... Chief Accountant..... 933-7005 x2018
 (ggreiner @stockton.k12.ca.us) FAX: 463-2966

Keller, Debra..... Admin. Early Child. Ed & School Reading. 933-7380 x1356
 (dkeller@stockton.k12.ca.us) FAX: 933-7031

Kelley, M. Christie..... Coord., Acad. Tutoring Student Svcs. 933-7130 x2615
 (mkelley@stockton.k12.ca.us) FAX: 933-7131

Locke-Swanson, Rosalynn..... Acting Admin., Special Education 933-7120 x2561
 (rlockeswanson@stockton.k12.ca.us) FAX: 933-7121

Mansfield, Bonnie..... Admin. of Grant Development..... 933-7105 x2207
 (bmansfield@stockton.k12.ca.us) FAX: 463-1346

Martin, Wayne Executive Director, Business Services..... 933-7055 x2091
 (wmartin@stockton.k12.ca.us) FAX: 933-7101

Matsuoka, Sam..... Manager, Custodial & Grounds..... 933-7050 x2808
 (smatsuoka@stockton.k12.ca.us) FAX: 933-7051

Melara, Adolfo..... Director, Program Improvement..... 933-7040 x2720
 (amelara@stockton.k12.ca.us) FAX: 469-3681

Migliori, Yvonne Director, Child Nutrition/Food Services 933-7015 x2261
 (ymigliori@stockton.k12.ca.us) FAX: 933-7016

Montoya, Susanne..... Director of Budget..... 933-7055 x2015
 (smontoya@stockton.k12.ca.us) FAX: 933-7011

Sahli, Robert..... Director, Curric. & Staff Dev. 933-7030 x2330
 (rsahli@stockton.k12.ca.us) FAX: 933-7031

Shook, William..... Risk Manager..... 933-7110 x2551
 (wshook@stockton.k12.ca.us) FAX: 465-2056

Tomlin, Cecil Director, Transportation Services..... 933-7145 x2660
 (ctomlin@stockton.k12.ca.us) FAX: 933-7146

Torres, Robert..... Chief Technology Officer, Info Service 933-7090 x2165
 (rtorres@stockton.k12.ca.us) FAX: 933-7091

Traub, Scott Administrator, Research & Evaluation 933-7105 x2201
 (straub@stockton.k12.ca.us) FAX: 463-5184

Vacant..... Adminis. of Visual/Perf. Arts/Phys Ed 933-7030 x2304
 (@stockton.k12.ca.us) FAX: 933-7031

Vacant..... Community Relations Officer 933-7025 x2061
 (@stockton.k12.ca.us) FAX: 933-7071

Vacant..... Director, Maintenance/Operations 933-7050 x2805
 (@stockton.k12.ca.us) FAX: 933-7051

Vacant..... Director, State & Federal Programs 933-7470 x2222
 (@stockton.k12.ca.us) FAX: 463-1346

Willis, Jason..... Chief Financial Officer..... 933-6645
 (jwillis@stockton.k12.ca.us) FAX: 933-7011

West, James..... Chief of Police..... 933-7085 x2461
 (jwest@stockton.k12.ca.us) FAX: 933-0218

Wright, Daniel Director, Career Pathways & Small 933-7040x2722
 (dwright@stockton.k12.ca.us) Learning Comm. Magnet Prog. FAX: 469-3681

Wyllie, Eugene..... Principal Auditor 933-7010 x2054
 (gwyllie@stockton.k12.ca.us) FAX: 933-7011

Yarbrough, Janet Coordinator, District Step Up Program..... 933-7130 x2618
 (jyarbrough@stockton.k12.ca.us) FAX: 933-7131

Yasuri, Eric Coord. of Mentoring & Community Svc..... 933-7130 x2616
 (eyasuri@stockton.k12.ca.us) FAX: 933-7131

Zapp, Joseph..... Construction/Projects Manager..... 933-7045 x2346
(jzapp@stockton.k12.ca.us) FAX: 933-7046

Adams Elementary School

6402 Inglewood Avenue, Stockton 95207 933-7155
Grades: PK-8; Enrollment: 613 FAX: 952-9208

Gruebele, Susan (sgruebele@stockton.k12.ca.us)..... Principal

Alexander Hamilton Elementary School

2245 E. Eleventh Street, Stockton 95206 933-7395
Grades: K-8; Enrollment: 683 FAX: 464-4851

Singh, Gurmel (gurmelsingh@stockton.k12.ca.us)..... Principal

August Elementary School

2101 Sutro Avenue, Stockton 95205 933-7160
Grades: PK-8; Enrollment: 675 FAX: 463-1179

Machuca, Myra (mmachuca@stockton.k12.ca.us)..... Interim Principal

Cesar Chavez High School

2929 Windflower Lane, Stockton 95212 933-7480
Grades: 9-12; Enrollment: 2,501 FAX: 475-9097

Nelson, Will (wnelson@stockton.k12.ca.us)..... Principal

Cleveland Elementary School

20 E. Fulton Street, Stockton 95204 933-7165
Grades: K-8; Enrollment: 742 FAX: 943-6592

Mohammad Khan, Heidi (hmohammadkhan@stockton.k12.ca.us)..... Principal

Commodore Stockton Skills School

2725 Michigan Avenue, Stockton 95204 933-7170
Grades: K-8; Enrollment: 1,098 FAX: 948-3004

Strader, Margaret (mstrader@stockton.k12.ca.us)..... Principal

Dolores Huerta Elementary School

1644 S. Lincoln Street, Stockton 95206

933-7220

Grades: K-8; Enrollment: 439

FAX: 933-7221

Standridge, Valarie (vstandridge@stockton.k12.ca.us)..... Principal

Edison High School

1425 S. Center Street, Stockton 95206

933-7425

Grades: P, 9-12; Enrollment: 2,184

FAX: 942-2106

Biedermann, Brian (bbiedermann@stockton.k12.ca.us)..... Principal

Edward C. Merlo Institute of Environmental Technology

1670 E. 6th Street, Stockton 95206

933-7190

Grades: P, 9-12; Enrollment: N/A

FAX: 469-3740

Hague, Pat (phague@stockton.k12.ca.us)..... Principal

El Dorado Elementary School

1540 N. Lincoln Street, Stockton 95204

933-7175

Grades: PK-8; Enrollment: 770

FAX: 465-4358

Oden, Teresa (toden@stockton.k12.ca.us)..... Principal

Elmwood Elementary School

840 S. Cardinal Avenue, Stockton 95205

933-7180

Grades: PK-8; Enrollment: 858

FAX: 465-1042

Semillo, John (jsemillo@stockton.k12.ca.us)..... Principal

Fillmore Elementary School

2644 E. Poplar Street, Stockton 95205

933-7185

Grades: PK-8; Enrollment: 809

FAX: 467-3672

Brannon, Tanisha (tbrannon@stockton.k12.ca.us)..... Principal

Franklin High School

300 N. Gertrude Avenue, Stockton 95215
Grades: P, 9-12; Enrollment: 2,293

933-7435
FAX: 464-4708

Luhn, Scott (sluhn@stockton.k12.ca.us)..... Principal

George W. Bush Elementary School

5420 Fred Russo Drive, Stockton 95212
Grades: K-8; Enrollment: 787

933-7350
FAX: 473-9792

Ulmer, Sylvia (sulmer@stockton.k12.ca.us)..... Principal

George Washington Elementary School

1735 W. Sonora Street, Stockton 95203
Grades: PK-8; Enrollment: 261

933-7320
FAX: 943-6209

Leffler, Laurie (laurieeffler@stockton.k12.ca.us)..... Principal

Grunsky Elementary School

1550 School Street, Stockton 95205
Grades: PK-8; Enrollment: 545

933-7200
FAX: 467-3190

Sousa, Michael (michaelsousa@stockton.k12.ca.us)..... Principal

Harrison Elementary School

3203 Sanguinetti Lane, Stockton 95205
Grades: PK-8; Enrollment: 681

933-7205
FAX: 948-3345

Phillips, Henry (hphillips@stockton.k12.ca.us)..... Principal

Hazelton Elementary School

535 W. Jefferson Street, Stockton 95206
Grades: PK-8; Enrollment: 665

933-7210
FAX: 465-5925

Castillo, Olivia (ocastillo@stockton.k12.ca.us)..... Principal

Hoover Elementary School

2900 Kirk Avenue, Stockton 95204

933-7215

Grades: K-8; Enrollment: 725

FAX: 463-3094

Schumacher, Janna (jschumacher@stockton.k12.ca.us) Principal

Institute of Business Management & Law

6505 Inglewood Avenue, Stockton 95207

933-7475

Grades: 9-12; Enrollment: 325

FAX: 472-7841

Moore, Shawnterra (smoore@stockton.k12.ca.us) Interim Principal

Jane Frederick Continuation School

1141 E. Weber Avenue, Stockton 95205

933-7340

Grades: 9-12; Enrollment: 253

FAX: 933-7341

Molina, Elena (emolina@stockton.k12.ca.us) Administrator

John C. Fremont Elementary School

2021 E. Flora Street, Stockton 95205

933-7385

Grades: K-8; Enrollment: 707

FAX: 462-3542

Cavazos, Marlesse (mcavazos@stockton.k12.ca.us) Principal

John Marshall Elementary School

1141 Lever Boulevard, Stockton 95206

933-7405

Grades: K-8; Enrollment: 717

FAX: 466-4962

Small, Ron (rsmall@stockton.k12.ca.us) Principal

Kennedy Elementary School

630 Ponce de Leon Avenue, Stockton 95210

933-7225

Grades: PK-8; Enrollment: 691

FAX: 474-6449

Spracher-Anderson, Suzanne (sspracher-anderson@stockton.k12.ca.us) Principal

King Elementary School

2640 E. Lafayette Street, Stockton 95205
Grades: PK-8; Enrollment: 896

933-7230
FAX: 466-4528

Fabian, Connie (cfabian@stockton.k12.ca.us)..... Principal

Kohl Open School

4115 N. Crown Avenue, Stockton 95207
Grades: K-8; Enrollment: 206

933-7235
FAX: 472-7425

West, Lee (bwest@stockton.k12.ca.us)..... Principal

Madison Elementary School

2939 Mission Road, Stockton 95204
Grades: K-8; Enrollment: 764

933-7240
FAX: 942-0426

Becker, Carol (cbecker@stockton.k12.ca.us) Principal

Maxine Hong Kingston Elementary School

6324 N. Alturas Avenue, Stockton 95207
Grades: K-8; Enrollment: 624

933-7493
FAX: 478-3256

Hale, Girlie (ghale@stockton.k12.ca.us)..... Principal

McKinley Elementary School

30 W. Ninth Street, Stockton 95206
Grades: PK-8; Enrollment: 760

933-7245
FAX: 948-2260

Ambrize, Sonia (sambrize@stockton.k12.ca.us)..... Principal

Montezuma Elementary School

1721 E. Carpenter Road, Stockton 95206
Grades: PK-8; Enrollment: 497

933-7260
FAX: 234-1850

Byers, Kathryn (kbyers@stockton.k12.ca.us).....Principal

Nightingale Elementary School

2843 Farmington Road, Stockton 95205

933-7255

Grades: PK-8; Enrollment: 694

FAX: 465-4036

Cowan, James (jcowan@stockton.k12.ca.us)..... Principal

Peyton Elementary School

349 E. Vine Street, Stockton 95202

933-7420

Grades: PK-8; Enrollment: 768

FAX: 466-2341

Jackson, Sherry (sjackson@stockton.k12.ca.us)..... Principal

Pulliam Elementary School

230 Presidio Way, Stockton 95207

933-7265

Grades: PK-8; Enrollment: 671

FAX: 473-3540

Brown, Vendetta (vdbrown@stockton.k12.ca.us)..... Principal

Richard A. Pittman Elementary School

701 E. Park Street, Stockton 95202

933-7496

Grades: K-8; Enrollment: 726

FAX: 942-2769

Machado, Adrienne (amachado@stockton.k12.ca.us)..... Principal

Rio Calaveras Elementary School

1819 E. Bianchi Road, Stockton 95210

933-7270

Grades: K-8; Enrollment: 855

FAX: 957-5182

Hall, Gina (ghall@stockton.k12.ca.us)..... Principal

Roosevelt Elementary School

776 S. Broadway Avenue, Stockton 95205

933-7275

Grades: PK-8; Enrollment: 546

FAX: 946-0657

Gauna, Reyes (rgauna@stockton.k12.ca.us)..... Principal

San Joaquin Elementary School

2020 S. Fresno Street, Stockton 95206

933-7280

Grades: K-8; Enrollment: 701

FAX: 467-7057

Medina, Nicholle (nmedina@stockton.k12.ca.us) Principal

School for Adults

1525 Pacific Avenue, Stockton 95204

933-7455

Grades: Adult; Enrollment: 8,500

FAX: 464-4917

Hirota, Carol (chirota@stockton.k12.ca.us)..... Principal

Stagg High School

1621 Brookside Road, Stockton 95207

933-7445

Grades: 9-12; Enrollment: 1,910

FAX: 954-9245

Parks, Bill (bparks@stockton.k12.ca.us Principal

Taft Elementary School

419 Downing Avenue, Stockton 95206

933-7285

Grades: PK-8; Enrollment: 508

FAX: 982-4257

Johnson, Dee (djohnson@stockton.k12.ca.us)..... Principal

Taylor Skills School

1101 Lever Boulevard, Stockton 95206

933-7290

Grades: PK-8; Enrollment: 578

FAX: 462-7143

Green, Jacquelyne (jgreen@stockton.k12.ca.us) Principal

Tyler Skills School

3830 Webster Avenue, Stockton 95204

933-7295

Grades: PK-8; Enrollment: 582

FAX: 943-7631

Campos, Louie (lcampos@stockton.k12.ca.us) Principal

Valenzuela Elementary School

52 W. Benjamin Holt Drive, Stockton 95207 933-7300
Grades: K-8; Enrollment: 300 FAX: 957-4684

Ortega, Margarito (mortega@stockton.k12.ca.us) Principal

Van Buren Elementary School

1628 E. Tenth Street, Stockton 95206 933-7305
Grades: PK-6; Enrollment: 593 FAX: 466-3705

Ringen, Ione (iringen@stockton.k12.ca.us) Principal

Victory Elementary School

1838 W. Rose Street, Stockton 95203 933-7310
Grades: PK-6; Enrollment: 657 FAX: 948-2259

Kaiser, Nancy (nkaiser@stockton.k12.ca.us) Principal

Walton Special Center

4131 N. Crown Avenue, Stockton 95207 933-7315
Enrollment: 93 FAX: 952-5784

Whitesides, Thomas (twhitesides@stockton.k12.ca.us) Principal

Weber Institute of Applied Sciences & Technology

302 W. Weber Avenue, Stockton 95203 933-7330
Grades: P, 9-12; Enrollment: 383 FAX: 466-7548

Vacant Principal

Wilhelmina Henry Elementary School

1107 S. Wagner Avenue, Stockton 95215 933-7490
Grades: K-8; Enrollment: 973 FAX: 467-4640

Ruley, Yanik (yruley@stockton.k12.ca.us) Principal

Wilson Elementary School

150 E. Mendocino, Stockton 95204

933-7325

Grades: K-8; Enrollment: 335

FAX: 948-3480

Loera, Suzanne (sloera@stockton.k12.ca.us) Principal

Tracy Unified School District

www.tracy.k12.ca.us

1875 W. Lowell Avenue
Tracy, CA 95376-4095

830-3200

Guzman, Ted President
Swenson, Bill Vice-President
Lewis, Kelly Clerk
Crandall, Gregg Member
Gouveia, Walter Member
Hawkins, Tom Member
Vaughan, James Member

Trustees meet the second and fourth Tuesday of each month

Franco, James Superintendent..... 830-3201
(jfranco@tUSD.net) FAX: 830-3204
 Goodall, Casey J. Associate Superintendent, Business 830-3230
 (cgoodall@tUSD.net) FAX: 830-3234
 Harrison, Sheila Assistant Superintendent, Instruction 830-3202
 (sjharrison@tUSD.net) FAX: 830-3209
 Vacant Assistant Superintendent, Human Resources 830-3260
 (@tUSD.net) FAX: 830-3264
 Anderson-Woo, Carol Director, Curriculum/Special Projects 830-3275
 (cwoo@tUSD.net) FAX: 830-3209
 Boragno-Dopp, Linda Director, Alternative Programs 830-3210
 (ldopp@tUSD.net) FAX: 830-3209
 Bussey, Janice Director, Staff Development 832-5200
 (jbussey@tUSD.net) FAX: 831-5506
 Call, Reed Director, Financial Services 830-3235
 (rcall@tUSD.net) FAX: 830-3239
 Cardoza, Jessica Communication Specialist 830-3201
 (jcardoza@tUSD.net) FAX: 830-3204
 Carter, Bonny Facilities Planner 830-3245
 (bcarter@tUSD.net) FAX: 830-3249
 Flynn, Nancy Director, Special Education 830-3270
 (nflynn@tUSD.net) FAX: 830-3274
 Hall, Paul Director, Student Services 830-3280
 (phall@tUSD.net) FAX: 830-3284
 Heerema, John Director, Transportation 831-5051
 (jheerema@tUSD.net) FAX: 830-3271
 Jayne, Gary Director, Materials Management 830-3240
 (gjayne@tUSD.net) FAX: 830-3239
 Minter, Cindy Director, Information Svcs. & Educ. Tech 831-5555
 (cminter@tUSD.net) FAX: 830-3220
 Sonnenburg, Donna Director, Instructional Media Center 831-5082
 (dsonnenburg@tUSD.net) FAX: 831-5572

Art Freiler Elementary School

2421 W. Lowell Avenue, Tracy 95376
Grades: K-8; Enrollment: 1,063

831-5170
FAX: 831-5177

Fracolli, Laurie (lfracolli@tUSD.net) Principal

Central Elementary School

1370 Parker Avenue, Tracy 95376
Grades: K-5; Enrollment: 462

830-3303
FAX: 830-3304

Link, Nancy (nlink@tUSD.net) Principal

Earle E. Williams Middle School

1600 Tennis Lane, Tracy 95376
Grades: 6-8; Enrollment: 1,256

830-3345
FAX: 830-3346

Montgomery, Barbara (bmontgomery@tUSD.net) Principal

George & Evelyn Stein High School

650 W. 10th Street, Tracy 95376
Grades: 11-12; Enrollment: 174

830-3395
FAX: 830-3396

Johannes, Cynthia (cjohannes@tUSD.net) Principal

George Kelly Elementary School

535 Mabel Josephine Drive, Tracy 95377
Grades: K-8; Enrollment: 1,126

831-5000
FAX: 831-5031

Gill, Khushwinder (kgill@tUSD.net) Principal

Gladys Poet-Christian Elementary School

1701 S. Central Avenue, Tracy 95376
Grades: K-8; Enrollment: 691

831-5252
FAX: 831-5344

Maslyar, William "Bill" (wmaslyar@tUSD.net) Principal

Institute for Global Commerce & Government

1904 N. Corral Hollow Road, Tracy 95376 830-3380
Grades: 9-12; Enrollment: 140 FAX: 830-3381

Lowery, Amy (alowery@tUSD.net) Associate Principal

John C. Kimball High School

3200 Jaguar Lane, Tracy 95377 832-6600
Grades: 9-10; Enrollment: 1,200 FAX: 830-3233

Domenichelli, Cheryl (cdomenichelli@tUSD.net) Principal

Louis A. Bohn Elementary School

350 E. Mt. Diablo, Tracy 95376 830-3300
Grades: K-5; Enrollment: 539 FAX: 830-3301

Hill, Charles (chill@tUSD.net) Principal

Louis J. Villalovoz Elementary School

1550 Cypress Drive, Tracy 95376 830-3331
Grades: K-5; Enrollment: 539 FAX: 830-3332

Beeso, Lisa (lbeeso@tUSD.net) Principal

McKinley Elementary School

800 W. Carlton Way, Tracy 95376 830-3319
Grades: K-5; Enrollment: 466 FAX: 830-3320

Lycan, Scott (slycan@tUSD.net) Principal

Melville S. Jacobson Elementary School

1750 W. Kavanagh Avenue, Tracy 95376 830-3315
Grades: K-5; Enrollment: 652 FAX: 830-3316

Sasser, Cindy (csasser@tUSD.net) Principal

Merrill F. West High School

1775 W. Lowell Avenue, Tracy 95376

830-3370

Grades: 9-12; Enrollment: 3,166

FAX: 830-3371

Frase, Jeff (jfrase@tUSD.net)..... Principal

Monte Vista Middle School

751 W. Lowell Avenue, Tracy 95376

830-3340

Grades: 6-8; Enrollment: 804

FAX: 830-3341

Prioste, Stephanie (sprioste@tUSD.net)..... Principal

North Elementary School

2875 Holly Drive, Tracy 95376

830-3350

Grades: K-8; Enrollment: 741

FAX: 830-3351

Medina, Fred (fmedina@tUSD.net)..... Principal

South/West Park Elementary School

501 Mt. Oso Road, Tracy 95376

830-3335

Grades: K-5; Enrollment: 923

FAX: 830-3336

Soto, Ramona (rsoto@tUSD.net)..... Principal

Tracy Adult School

1902 N. Corral Hollow Road, Tracy 95376

830-3384

Grades: Adult; Enrollment: 450

FAX: 830-3385

Pickering, Dave (dpickering@tUSD.net)..... Principal

Tracy High School

315 E. 11th Street, Tracy 95376

830-3360

Grades: 9-12; Enrollment: 2,747

FAX: 830-3361

Noll, Jason (jnoll@tUSD.net)..... Principal

Wanda Hirsch Elementary School

1280 Dove Street, Tracy 95376

830-3312

Grades: K-5; Enrollment: 723

FAX: 830-3313

Fine, Jon (jfine@tUSD.net) Principal

Willow Community Day School/Duncan Russell

164 W. Grant Line Road, Tracy 95376

830-3357

Grades: 7-11; Enrollment: 71

FAX: 831-5550

Washington, Carla (cWashington@tUSD.net) Principal

San Joaquin County Charter Schools

Aspire Public Schools
www.aspirepublicschools.org

Aspire Langston Hughes Academy

612 E. Magnolia Street, Weber Building, Stockton 95202 465-4100
Sponsoring District-Stockton Unified FAX: 465-4334
Grades: 6-12; Enrollment: 550

Solina, Anthony (anthony.solina@aspirepublicschools.org)..... Principal

Benjamin Holt College Preparatory Academy

3201 E. Morada Lane, Stockton 95212 955-1477
Sponsoring District-Lodi Unified FAX: 955-1472
Grades: 6-12; Enrollment: 550

Salveti, Gretchen (gretchen.salveti@aspirepublicschools.org)..... Principal

River Oaks Charter

1801 Pyrenees Avenue, Stockton 95210 956-8100
Grades: K-5; Enrollment: 350 (Sponsoring District-Lodi) FAX: 956-8102

Mathers, Kat (kat.mathers@aspirepublicschools.org)..... Principal

Rosa Parks Academy

1930 S. D Street, Stockton 95206 944-5590
Sponsoring District-Stockton Unified FAX: 465-2690
Grades: K-5; Enrollment: N/A

Welch, Mary (mary.welch@aspirepublicschools.org)..... Principal

University Public School

10038 Highway 99, E. Frontage Road, Stockton 95212 931-5399
Sponsoring District-Lodi Unified FAX: 931-5185
Grades: K-5; Enrollment: 352

Fachner, Karla (karla.fachner@aspirepublicschools.org)..... Principal

California Virtual Academy at San Joaquin
www.caliva.org

2360 Shasta Way, Unit A, Simi Valley 93065
Sponsoring District-Stockton Unified
Grades: K-12; Enrollment: N/A

866-339-6790 or 805-581-0202
FAX: 805-581-0330

Abston, Katrina (kabston@caliva.org).....Head of Schools

Delta Charter School

31400 S. Koster Road, Tracy 95304
Grades: K-12; Enrollment: N/A
Sponsoring District - New Jerusalem Elementary

830-6363
FAX: 830-9707

Lytle, Stephanie (slytle@njes.org)..... Principal

Dr. Lewis Dolphin Stallworth, Sr. Charter School

1610 E. Main, Stockton 95205
Sponsoring District-Stockton Unified
Grades: K-12; Enrollment: N/A

948-4511
FAX: 943-5218

Stallworth, Gayle (yellowgree@aol.com)Director

**Institute of Business Management &
Law Charter High School**

6650 Inglewood Avenue, Stockton 95207
Sponsoring District-Stockton Unified
Grades: 9-12; Enrollment: 291

933-7475
FAX: 472-7841

Thomas, Dr. Shawnterra (shawnterramoore@stockton.k12.ca.us)..... Principal

Joe Serna, Jr. Charter School

19 S. Central, Lodi 95240

331-7809

Sponsoring District-Lodi Unified

FAX: 331-7997

Grades: K-8; Enrollment: 300

Gillespie, Michael (mgillespie@lodiused.net)..... Principal

New Jerusalem School

31400 S. Koster Road, Tracy 95304

835-6789

Sponsoring District-New Jerusalem Elementary

FAX: 835-2613

Grades: 1-8; Enrollment: 130

Payne, Steve (spayne@sjcoe.net)..... Principal

Stockton Alternative High School

35 Van Buren Street, Stockton 95202

933-7000

Sponsoring District-Stockton Unified

Grades: 9-12; Enrollment: N/A

Hirota, Carol (chirota@stockton.k12.ca.us)..... Principal

Stockton Unified Early College Academy

640 N. San Joaquin Street, Stockton 95202

933-7370 x 1492

Sponsoring District-Stockton Unified

FAX: 939-9504

Grades: 9-12; Enrollment: N/A

Hall, Michael R. (seca@stockton.k12.ca.us)..... Principal

Tracy Learning Center
www.tracylc.net

51 E. Beverly Place, Tracy 95376

831-5240

Sponsoring District-Tracy Unified

FAX: 831-5243

Grades: Primary (K-4); Enrollment: 315

Discovery (5-8); Enrollment: 360

Millennium High School (9-12); Enrollment: 400

Stewart, Virginia (vstewart@tracylc.net)..... Executive Director

Venture Academy Family of Schools
www.ventureacademyca.org

Venture Academy

2829 Transworld Drive, Stockton 95206

468-5940

Sponsoring-San Joaquin County Office of Education

FAX: 468-9000

Grades: K-12; Enrollment: 900

Delta VISTA Science & Technology Academy (9-12)

Foundations - Fine and Performing Arts (9-12)

Venture Academy Home Study (9-12)

Venture Academy Synergy Home School (K-8)

Venture Integrated Technology Academy (7 & 8)

Venture Integrated Technology Academy Prep (5 & 6)

Venture Land (K thru 4)

Durham Ferry Outdoor Education Center

29442 S. Airport Road, Manteca 95337

468-5940

Sponsoring-San Joaquin County Office of Education

FAX: 468-9000

Grades: (5-12); Enrollment: N/A

San Joaquin Career & Technical High School "imagine-IT"

2911 Transworld Drive, Stockton 95206

953-2112

Grades: 9-12; Enrollment: 150

FAX: 953-2111

21st Century Technology

Engineering

Alternative Energy

Fine Arts

Aviation

Science

Construction

Sheet Metal (HVAC)

Focacci, Kathleen (kfocacci@sjcoe.net)Director

**San Joaquin County
Agencies and Organizations**

California School Boards Association
www.csba.org

3100 Beacon Boulevard, West Sacramento, CA 95691 800-266-3382 or 916-371-4691
FAX: 916-371-3407

Plotkin, Scott..... Executive Director.....splotkin@csba.org

District Associations

Banta Educators' Association

Lorentz, Teresa..... President..... 835-0171
(tlorentz@sjcoe.net)

California School Employees' Association - Lodi Unified Chapter #77

Hausauer, Todd President..... 331-7403

Escalon Unified Teachers' Association

Roncale, Ray President..... 838-7031
(rroncale@sjcoe.net)

Jefferson Teachers' Association

Cooper, Liz & Lang, Jeniene .. Co-Presidents 839-2380
(jelang@sjcoe.net; mcooper@sjcoe.net)

Lammersville Teachers' Association

Herron, Mike President..... 835-0138
(mherron@sjcoe.net)

Lincoln Unified Teachers' Association

Olmstead, Janet President..... 483-2118
(jolmstead@lusd.net)

Association of Linden Educators

Smith, Stan President 931-0735
(stasmith@sjcoe.net)

Lodi Education Association

Kenmotsu, Sue President, LEA Office 477-2425
(lodieducation@yahoo.com)

Manteca Educators' Association (MEA)

Johnson, Ken President, MEA Office 603-3767
(kjohnson@musd.net)

New Jerusalem Educators' Association

Pocoroba, Kathy President, New Jerusalem School 835-2597
(kpocoroba@sjcoe.net)

Retired Teachers' Association

Jacobs, Stanley San Joaquin Division #20 477-4237

Ripon Unified District Teachers' Association

Russell, Clair Ripon Elementary 599-4225
(crussell@sjcoe.net)

San Joaquin County Coordinating Council/CTA

7330 N. West Lane, Stockton 95210 478-6091

Ware-Mitchell, Dorothy Lincoln High School 953-8920
(dware@lUSD.net)

San Joaquin County Educators' Association

McNair, Carole President 481-2143
(sjcoeteachers@hotmail.net)

San Joaquin Delta College CSEA Chapter 359

Baker, Dana President 954-5357

San Joaquin Delta College Peace Officers Association

Vasquez, Mario..... President..... 954-5000

San Joaquin Delta College Teachers' Association (CTA/NEA)

Gonzales, Joseph..... President..... 954-5736

Stockton Teachers' Association

Executive Office, 7330 N. West Lane, Stockton 95210 478-5074

McCaughy, Anne President..... 601-9935
(amccaughy@yahoo.com)

Parent Teacher Student Association

8th District Executive Board 224-7828
2010 W. Swain Road, Stockton, CA 95207

Elliott, Debra President..... 668-7234
(president@8thDistrictPTSA.info)

Schlitz, Robin..... Secretary..... 634-6287
(secretary@8thDistrictPTSA.info)

Michael, Lori President, Lodi Council..... 957-2045
(Lorimichael8@yahoo.com)

Austin, Nan Webmaster..... 669-0654
(info@8thDistrictPTSA.info)

Chapman, Mary Ann..... Convention Chairman 476-8506
(Convention@8thDistrictPTSA.info)

Garr, Jan..... Newsletter Editor..... 476-1094
(Voices@8thDistrictPTSA.info)

McBride, Patti 952-7945
(Reflections@8thDistrictPTSA.info)

**San Joaquin County
Public Schools Directory Index**

Charter Schools

Aspire Public Schools

Aspire Langston Hughes Academy	465-4100
Benjamin Holt College Prep Academy	955-1477
River Oaks.....	956-8100
Rosa Parks Academy	944-5590
University Public School.....	931-5399

California Virtual Academy at San Joaquin 866-339-6790 or 805-581-0202

Delta Charter School..... 830-6363

Dr. Lewis Dolphin Stallworth Charter School 948-4511

Institute of Business Management & Law..... 933-7475

Joe Serna, Jr. Charter School 331-7809

New Jerusalem School 835-6789

Stockton Alternative High School..... 933-7000

Stockton Unified Early College Academy 933-7370 x1492

Tracy Learning Center (Primary, Discovery & Millennium Charter)..... 831-5240

Venture Academy Family of Schools..... 468-5940

Districts

Banta Elementary School District	835-0843
Escalon Unified School District	838-3591
Jefferson Elementary School District	836-3388
Lammersville Elementary School District	836-7400
Lincoln Unified School District	953-8700
Linden Unified School District	887-3894
Lodi Unified School District	331-7000
Manteca Unified School District	825-3200
New Hope Elementary School District	794-2376
New Jerusalem Elementary School District	835-2597
Oak View Union Elementary School District	368-0636
Ripon Unified School District	599-2131
San Joaquin Delta College	954-5151
Stockton Unified School District	933-7000
Tracy Unified School District	830-3200

Personnel

A

Abston, Katrina.....	CA Virtual Academy at SJ.....	805-581-0202
Aebi, Lynn.....	Lodi Unified.....	331-7010
Adair, Leslie.....	Monticello Elementary - Jefferson Elementary.....	833-9300
Aguilar, Roberto.....	County Office.....	468-9224
Alba, John.....	East Union High - Manteca Unified.....	825-3125
Alcom, Diane.....	Escalon Unified.....	838-3591
Alimbini, Dee.....	Stockton Unified.....	933-7380x1351
Allen, Gloria.....	Stockton Unified.....	933-7000
Allen, Jo Ella.....	Komure Elementary - Manteca Unified.....	234-4812
Alvarez, Jeri.....	Stockton Unified.....	933-7135x2513
Amato, Anthony.....	Stockton Unified.....	933-7070
Amato, Bob.....	Collegeville - Escalon Unified.....	941-2007
	Farmington - Escalon Unified.....	886-5344
Ambrize, Sonia.....	McKinley Elementary - Stockton Unified.....	933-7245
Anderson, Deborah.....	Oak View Union Elementary.....	368-0636
Anderson, J. Steven.....	Neil Hafley Elementary - Manteca Unified.....	858-7215
Anderson, Stephanie.....	County Office.....	468-4880
Anderson, Virginia.....	Clements - Lodi Unified.....	331-7300
	Lockeford - Lodi Unified.....	331-7214
Anderson-Woo, Carol.....	Tracy Unified.....	830-3275
Andreasen, Kimberly.....	County Office.....	468-9284
Arellano, Sonya.....	Lincoln Elementary - Manteca Unified.....	825-3380
Arguelles, Johnny.....	County Office.....	468-5926
Asplund, Terry.....	Sierra Middle - Lincoln Unified.....	953-8748
Asuncion, Gayle.....	Stockton Unified.....	933-7060x2392
Athearn, Rolf.....	County Office.....	931-4047
Athey, Kathy.....	County Office.....	468-9190
Atterberry, William.....	Lodi High - Lodi Unified.....	331-7815
Austin, Nan.....	Parent Teacher Student Association.....	669-0654

B

Badovinac, Michele.....	County Office.....	468-9189
Bahr, Gregory.....	County Office.....	650-747-0139
Baiocchi, Jamie.....	County Office.....	468-9031
Baker, Dana.....	San Joaquin Delta Comm. College - CSEA.....	954-5357
Balestreri, Joanne.....	French Camp Elem. - Manteca Unified.....	938-6370
Balian, Sherry.....	Lodi Unified.....	954-5790
Balzarini, Noel.....	Lammersville Elementary.....	836-7400
Barge, Doug.....	Lodi Unified.....	331-7121
Becker, Carol.....	Madison Elementary - Stockton Unified.....	933-7240
Beckman, Donna.....	County Office.....	823-1383
Beeso, Lisa.....	Louis J. Villalovoz - Tracy Unified.....	830-3331
Bestolarides, Ted.....	Lincoln Unified.....	953-8700
Bhatti, Rupinder.....	Manteca Day School - Manteca Unified.....	239-6282
Biedermann, Brian.....	Edison High - Stockton Unified.....	933-7425
Biedermann, Scott.....	County Office.....	468-9297
Bills, Sr., Harvey N.....	Lodi Unified.....	331-7000
Blote, Jeri.....	County Office.....	468-5907
Boardman, Colleen.....	Stockton Unified.....	933-7000

Bock, Connie.....	County Office	468-4880
Bogetti, Stephen.....	New Jerusalem Elementary	835-2597
Bojé, Lisa	Lincoln Unified.....	953-8716
Boragno-Dopp, Linda	Tracy Unified	830-3210
Bordner, Celeste	Erma B. Reese Elem. - Lodi Unified	331-7424
Borgeson, Dale	George McParland - Manteca Unified	825-4281
Boutte, Patricia	Great Valley Elem. - Manteca Unified	938-6300
	Great Valley Annex - Manteca Unified	938-6310
Brannon, Tanisha	Fillmore Elementary - Stockton Unified.....	933-7185
Breakfield, Steve	Stockton Unified.....	933-7045x2341
Breitenbucher, Jacqui.....	Manteca Unified.....	858-0728
Brenneise, Sharon.....	County Office	468-9283
Bridges, Jim.....	Jefferson Elementary - Jefferson Elem.	835-3053
Brigham, Carol	County Office	639-2373
Brown, Barbara	County Office	823-1383
Brown, Theresa.....	San Joaquin Delta Community College.....	954-5151
Brown, Harold.....	George Lincoln Mosher - Lodi Unified	953-9298
Brown, Vendetta.....	Pulliam Elementary - Stockton Unified.....	933-7265
Brown, Vince	San Joaquin Delta Community College.....	954-5012
Brumley, Phil.....	Escalon Unified	838-3591
Brunni, Brandie.....	County Office	468-9279
Buckley, Keri.....	Bethany - Lammersville Elementary	836-7250
Burnette, Debbie	Lammersville Elementary	836-7400
Burrue, Marlene.....	County Office	468-9288
Bussey, Janice	Tracy Unified	832-5200
Byers, Kathryn.....	Nightingale Elementary - Stockton Unified.....	933-7260

C

Call, Reed	Tracy Unified	830-3235
Calonico, Joan.....	Don Riggio - Lincoln Unified.....	953-8761
Camp, Daryl.....	Bear Creek High - Lodi Unified	331-7234
Campos, Louie	Tyler Skills - Stockton Unified	933-7295
Canepa, Paul.....	Lincoln Unified.....	953-8700
Cardoza, Jessica	Tracy Unified	830-3201
Camahan, Diane.....	County Office	468-9057
Carroll, Paula	County Office	468-9261
Carter, Bonny.....	Tracy Unified	830-3245
Cassel, Bonnie	Lodi Unified	331-7000
Castellanos, Audrey.....	County Office	468-5952
Castellanos, Steve	San Joaquin Delta Community College.....	954-5151
Castillo, Daniel.....	Stockton Unified.....	933-7000
Castillo, Olivia	Hazelton Elementary - Stockton Unified.....	933-7210
Castillo, Zenon.....	County Office	468-9273
Caton, Al.....	Escalon Unified	838-3591
Cavasos, Marlesse	John C. Fremont - Stockton Unified	933-7385
Cervantes, Lily.....	Stockton Unified.....	933-7065x2130
Cervantes, Maria.....	Heritage Primary - Lodi Unified	331-7334
Chamberlain, David.....	Lathrop High - Manteca Unified	938-6350
Champan, Mary Ann.....	Parent Teacher Student Association	476-8506
Christensen, Aggie.....	County Office	468-9039
Cicolani, Rhonda.....	County Office	468-9082
Clark, Greg.....	County Office	468-9061
Clark, Leonard.....	New Hope Elementary.....	794-2376
Coburn, Sheri	County Office	468-4960
Coleman, Kathryn.....	Ripon Unified.....	599-2131
Colombini, Jay.....	Linden Unified	887-3894

Colwell, Steve.....	Lodi Unified.....	331-7608
	Lincoln Tech. Academy - Lodi Unified	331-7617
Condit, Kristen.....	County Office	953-2123
Condit, Mark.....	County Office	468-5980
Condon, Chris.....	County Office	468-9272
Cooper, Liz.....	Jefferson Teachers' Association	839-2380
Cornish, Rick.....	County Office	468-5924
Costa, Ivan.....	Stockton Unified.....	933-7095x2249
Costamagna, Florence.....	School Readiness/Preschool - Lodi Unified	331-7252
Council, Warren.....	Ripona Elementary - Ripon Unified	599-4104
Cowan, James.....	Montezuma Elem. - Stockton Unified	933-7255
Cox, Mary Ann.....	San Joaquin Delta Comm. College.....	954-5151
Crandall, Gregg.....	Tracy Unified	830-3200
Crawford, Tracie.....	Veritas Elementary - Manteca Unified.....	858-7390
Crouse, Kathy.....	Calla High - Manteca Unified	858-7230
Cuaresma, Janine.....	County Office	468-9111
Cunningham, Chris.....	Lammersville Elementary	830-3200

D

D'Amico, Samy.....	Lammersville Elementary	835-0138
Davis, Jennifer.....	County Office	468-9056
Davis, Jim.....	Ronald E. McNair High - Lodi Unified	953-9245
Davis, Ken.....	Lodi Unified.....	331-7000
Davis, Meredith.....	County Office	468-4866
DeGanna, Debbie.....	Lincoln Unified.....	953-8735
Dei Rossi, Gary F.....	County Office	468-9027
Deller, Karen.....	Lincoln Unified.....	953-8722
Deliddo, Jack.....	Ripon Unified.....	599-2131
Denero, Valerie.....	County Office	468-4808
Denman, Linda.....	George Washington - Lodi Unified	331-7451
DePrater, Karen.....	County Office	468-4851
Dexter, Karyn.....	County Office	468-4824
Domenichelli, Cheryl.....	John C. Kimball High - Tracy Unified.....	832-6600
Dosty, Allen.....	Henderson Community Day- Lodi Unified.....	331-7331
Douglas, Elaine.....	Leroy Nichols Elementary - Lodi Unified.....	331-7378
Douglas, Odie.....	Lodi Unified.....	331-7003
Downs-Stroh, Katy.....	County Office	468-5983
Draa, William.....	Banta Elementary	835-0843
Drennen, Kathy.....	Lincoln Unified.....	953-8655
Dunham, Pamela.....	County Office	468-9116
Duong, Annie.....	County Office	468-5958

E

Eaton, Dana.....	Jefferson Elementary	836-3388
Eheler, Sylvia.....	Colony Oak Elementary - Ripon Unified.....	599-7145
Eldridge, Edward.....	Lodi Unified.....	331-7025
Elliott, Debra.....	Parent Teacher Student Association	668-7234
Engelhardt, Bill.....	County Office	468-4883
Estes, Corrie.....	County Office	468-9167
Estes, Ronald.....	Linden Unified	887-3894

F

Fabian, Connie.....	King Elementary - Stockton Unified.....	933-7230
Fachner, Karla.....	University Public School - Aspire Charter	931-5399

Fagundes, Suzanne.....	Lincoln Unified.....	953-8727
Faith, Dan.....	Manlio Silva Elementary - Lodi Unified	953-9302
Fernandez, Florence	County Office	468-9074
Fereria, Lisa.....	Weston Elementary - Ripon Unified.....	599-7113
Ferreira, Scott.....	Van Allen - Escalon Unified.....	838-2931
Fine, Jon	Wanda Hirsch Elementary - Tracy Unified	830-3312
Finton, Paula.....	Tom Hawkins - Jefferson Elementary	839-2380
Fisher, Linda.....	Brookside Elementary - Lincoln Unified.....	953-8642
Fisher, Mike.....	Ripon Unified.....	599-2131
Flynn, Nancy.....	Tracy Unified	830-3270
Focacci, Kathy.....	Venture Academy Family of Schools	468-5940
Forte, Debbie.....	August Knodt - Manteca Unified.....	938-6200
Fong, Maria.....	Lodi Unified.....	331-7127
Founts, Mick.....	County Office	468-9033
Fracoli, Laurie	Art Freiler Elementary - Tracy Unified	831-5070
Franco, James	Tracy Unified	830-3201
Frase, Jeff.....	Merrill F. West High - Tracy Unified.....	830-3370
Frink, Wendy	County Office	468-9111
Fritchen, Jill.....	County Board	468-4802
Frontz, Linda.....	Vista High - Escalon Unified.....	838-8910
Fry, Kelly.....	County Office	468-9107

G

Gammon, Louise.....	County Office	649-0570
Garcia, Carlos.....	Lodi Unified.....	331-7169
Gardner, Paul	County Office	468-4880
Gardner, Susie	County Office	468-4832
Garibaldi, Albert.....	Banta Elementary - Banta Elementary	835-0171
Garr, Jan	Parent Teacher Student Association	476-1094
Garr, Michael	Lodi Unified.....	331-7218
Gauna, Reyes.....	Roosevelt Elementary - Stockton Unified.....	933-7275
Gebhardt, Vern.....	Manteca Unified.....	825-3200
Gerrity, Allison.....	Sutherland Elementary - Lodi Unified	953-8999
Gibbs, Randy.....	County Office	468-9093
Gill, Khushwinder.....	George Kelly Elementary - Tracy Unified	831-5000
Gillespie, Michael.....	Joe Serna, Jr. Charter - Lodi Unified	331-7809
Gire, Bob.....	Lodi Unified.....	331-7070
Glassco, Jan.....	Julia Morgan Elementary - Lodi Unified.....	953-8453
Glusing, Sarah.....	County Office	953-2127
Goatcher, Roger.....	Manteca Unified.....	858-0837
Goehring, Roscoe.....	Stockton Unified.....	933-7110x2553
Gonsalves, Kathleen.....	County Office	468-9084
Gonzales, Elsa.....	County Office	468-9144
Gonzales, Joseph.....	SJ Delta College Teachers Association	954-5736
Gonzalves, Ivie.....	Lodi Unified.....	331-7075
Goodall, Casey.....	Tracy Unified	830-3230
Goulart, Sheilah.....	County Office	468-9246
Gouveia, Walter.....	Tracy Unified	830-3200
Grauman, Elliott.....	Lodi Unified.....	331-7101
Green, Jacquelyne	Taylor Skills - Stockton Unified.....	933-7290
Greene, Audrey.....	Shasta Elementary - Manteca Unified	858-7400
Greiner, Christie.....	Stockton Unified.....	933-7005x2018
Griffith, Sheri.....	Linden Unified.....	931-2192
Grossman, Kelly.....	County Office	468-4835
Gruebele, Susan.....	Adams Elementary - Stockton Unified.....	933-7155
Gutierrez, Anthony J.....	County Board	468-4802
Gutierrez, Jorge.....	County Office	468-9940

Guzman, Ted.....Tracy Unified 830-3200

H

Hague, Pat.....Merlo Inst. of Env. Tech. - Stockton Unified 933-7190
Hale, Girley.....Maxine Hong Kingston - Stockton Unified..... 933-7493
Hall, Gina.....Rio Calaveras - Stockton Unified..... 933-7270
Hall, Michael.....SU Early College Acad. - Stockton Unified...933-7370x1492
Hall, Paul.....Tracy Unified 830-3280
Hall, Rebecca.....Linden Unified 887-3894
Halseth, Donald.....Manteca Unified..... 858-0742
Hamilton, P.J.....County Office 468-4925
Hana, Nora.....County Office 468-9089
Hancock, Ellen.....County Office 468-4967
Hand, Art.....Lodi Unified 331-7219
Hansen, Dale.....Lammersville Elementary 836-7400
Hargis, Carrie.....Lodi Unified 331-8075
Harrison, Sheila.....Tracy Unified 830-3202
Hart, Kathy.....San Joaquin Delta Community College..... 954-5047
Hatanaka, Jill.....County Office 953-2124
Hausauer, Todd.....CSEA..... 331-7403
Hawkins, Tom.....Tracy Unified 830-3200
Hayes, Jennifer.....Lincoln Unified..... 953-8731
Hayes, Lisa.....Lodi Unified 331-7033
Heerema, John.....Tracy Unified 831-5051
Helsley, Kendra.....Dent Elementary - Escalon Unified 838-7031
Hernandez, Vincent.....County Office 468-9270
Herrin, Lisa.....Sequoia Elementary - Manteca Unified 858-7440
Herron, Mike.....Lammersville Teachers' Assoc..... 835-0138
Hill, Charles.....Louis A. Bohn - Tracy Unified 830-3300
Hill, Hazel.....San Joaquin Delta Community College..... 954-5093
Hiramoto, James.....Lammersville Elementary 836-7400
Hirota, Carol.....Stk. Alt. High - Stockton Unified 933-7000
.....School for Adults - Stockton Unified 933-7455
Hitchcock, Susan.....Clairmont Elementary - Lodi Unified..... 953-8267
Hodgson, Janesse.....County Office 468-9027
Hoffman, Carla.....County Office 468-9157
Holiday, Rex.....Manteca Unified..... 825-3200
Holmerud, Debbi.....Lincoln High - Lincoln Unified 953-8921
Hopman, Debbi.....County Office 468-5948
Houck, Debbie.....Manteca Unified..... 858-0762
Huft, Mark.....Oak View Union Elementary 368-0636
Hutton, Carolyn.....Banta Elementary 835-0843

I

Irvin, Denise.....County Office 468-9033

J

Jackman, Brian.....Jefferson Elementary 836-3388
Jackson, Sherry.....Peyton Elementary - Stockton Unified..... 933-7420
Jacobs, Stanley.....Retired Teachers' Association 477-4237
Jamero, Sherrie.....Walter Woodward - Manteca Unified 858-7430
Jansen, Julie.....County Office 468-9105
Jardine, Carlin.....County Office 468-9166
Jayne, Gary.....Tracy Unified 830-3240

Jefferson, Irvin	Lodi Unified.....	331-7766
Jennings, Charles	San Joaquin Delta Community College.....	954-5631
Johannes, Cynthia	George & Evelyn Stein - Tracy Unified	830-3395
Johannsen, Joel.....	Escalon High - Escalon Unified.....	838-7073
Johnson, Dee	Taft Elementary - Stockton Unified	933-7285
Johnson, Ken	Manteca Educators' Association.....	603-3767
Johnson, Staci.....	County Office	931-4047
Johnson, Steven	Lodi Unified.....	331-7080
	Dorothy J. Mahin - Lodi Unified.....	331-7366
Johnston, Barbara	Lodi Unified.....	331-7005
Jones, Richard	Lodi Unified.....	331-7000
Justice-Brown, Joan	County Office	468-4928

K

Kahl, Phyllis.....	McCandless - Lincoln Unified.....	953-8740
	Sture Larsson - Lincoln Unified	953-8687
Kaiser, Nancy	Victory Elementary - Stockton Unified.....	933-7310
Kearney, Catherine	County Office	468-9155
Keller, Debra	Stockton Unified.....	933-7380x1356
Kelley, M. Christie.....	Stockton Unified.....	933-7130x2615
Kelly, Pamela	County Office	468-9192
Kenmotsu, Sue	Lodi Education Association.....	477-2425
Kern, Bruce	County Office	931-4047
Keyser, Alvina.....	Lammersville Elementary	836-7400
Khan, Taj	San Joaquin Delta Community College.....	954-5151
Khanna, Alul.....	Lammersville Elementary	836-7400
King, Wendy	Manteca Unified.....	825-3200
Kirby, Pierre.....	Podesto Ranch Elem. - Lodi Unified	953-8543
Kirilov, John.....	Woodbridge Elem. - Lodi Unified	331-8160
Kleinert, Chris	County Office	468-9111
Kludt, Sandee	County Office	953-2139
Koch, Cricket	Lodi Unified	331-7160
Koster, William.....	New Jerusalem Elementary	835-2597
Kotowski, Lisa.....	Lodi Unified	331-7028
Krueger, Brandon.....	Creekside Elementary - Lodi Unified.....	331-7285

L

Largent, John.....	Escalon Unified	838-3591
Larson, Mike	Ripon Elementary - Ripon Unified	599-4225
Leffler, Laurie	George Washington - Stockton Unified	933-7320
Legal Services.....	County Office	468-4850
Lenz, Susan.....	Lincoln Unified.....	953-8700
Lewis, Kelly	Tracy Unified	830-3200
Link, Nancy.....	Central Elementary - Tracy Unified.....	830-3303
Linn-Nieves, Karen	County Office	468-9023
Locke-Swanson, Rosalynn.....	Stockton Unified.....	933-7120x2561
Loera, Suzanne.....	Wilson Elementary - Stockton Unified.....	933-7325
Long, Cathy	County Office	468-5979
Lorentz, Teresa.....	Banta Educators' Association	835-0171
Lorenz, Nicole.....	County Office	468-9053
Lotti, Anna	County Office	468-9189
Loux, Bob.....	County Office	468-9059
Low, Everett.....	Lincoln Unified.....	953-8700
Lowder, Steven	Lincoln Unified.....	953-8712
Lowery, Amy	Inst. for Global Comm. & Govt. - Tracy Unified.....	830-3380
Luhn, Scott.....	Franklin High - Stockton Unified.....	933-7435

Luna, Linda.....	Stockton Unified.....	933-7030x2311
Lyall, Jann.....	Houston Elementary.....	331-7475
Lycan, Scott.....	McKinley Elementary - Tracy Unified.....	830-3319
Lytle, Stephanie.....	Delta Charter.....	830-6363

M

Machado, Adrienne.....	Richard A. Pittman - Stockton Unified.....	933-7496
Machado, Diana.....	Linden Unified.....	887-3894
Machuca, Myra.....	August Elementary - Stockton Unified.....	933-7160
Maciel, Jose.....	County Office.....	933-7345x2750
Malandro, Randy.....	Christa McAuliffe Middle - Lodi Unified.....	953-9431
Mansfield, Bonnie.....	Stockton Unified.....	933-7105x2207
Mantooth, Dave.....	Escalon Unified.....	838-3591
Markle, Stephanie.....	Linden High - Linden Unified.....	887-3073
Martin, Doug.....	County Office.....	468-9005
Martin, Nancy.....	John R. Williams - Lincoln Unified.....	953-8767
Martin, Wayne.....	Stockton Unified.....	933-7055x2091
Martinez, Anthony.....	Lincoln Unified.....	953-8779
Martinez, Terrell.....	County Office.....	468-4828
Maslyar, William "Bill".....	Gladys Poet-Christian - Tracy Unified.....	831-5252
Mathers, Kat.....	River Oaks - Aspire Charter.....	956-8100
Matsuoka, Sam.....	Stockton Unified.....	933-7050x2808
Maxedon, Mindy.....	Jefferson Elementary.....	836-2766
McBride, Patti.....	Parent Teacher Student Association.....	952-7945
McCandless, Michael.....	Waterloo Elementary - Linden Unified.....	931-0818
McCarthy, Beverly Fitch.....	Stockton Unified.....	933-7000
McCaughey, Anne.....	Stockton Teachers Association.....	601-9935
McCreath, Doug.....	Manteca High - Manteca Unified.....	825-3150
McGregor, Scott.....	Elkhorn Elementary - Lodi Unified.....	331-7330
McHugh, Lisa.....	New Jerusalem.....	835-2597
McKilligan, Mike.....	Lodi Unified.....	331-7100
McNair, Carole.....	San Joaquin Co. Educators' Assoc.....	481-2143
Medeiros, Manuel.....	Manteca Unified.....	825-3200
Medford, Virginia.....	John Muir Elementary - Lodi Unified.....	331-7312
Medina, Fred.....	North Elementary - Tracy Unified.....	830-3350
Medina, Nicolle.....	San Joaquin Elem. - Stockton Unified.....	933-7280
Meeker, Cheryl.....	Manteca Unified.....	858-0702
Melara, Adolfo.....	Stockton Unified.....	933-7040x2720
Mendoza-Sanchez, Javier.....	County Office.....	933-7345x7946
Merritt, Grace.....	Jefferson Elementary.....	836-3388
Messer, Jason.....	Manteca Unified.....	858-0729
Metivier, Carol.....	Jefferson Elementary.....	836-0232
Michael, Lori.....	Parent Teacher Student Association.....	957-2045
Migliori, Yvonne.....	Stockton Unified.....	933-7015x2261
Minter, Cindy.....	Tracy Unified.....	831-5555
Misaki, Lori.....	County Office.....	639-2632
Moffitt, Susan.....	Anthony C. Traina - Jefferson Elementary.....	839-2379
Mohammad Kahn, Heidi.....	Cleveland Elementary - Stockton Unified.....	933-7165
Molina, Elena.....	Jane Frederick - Stockton Unified.....	933-7340
Monegan, Linda.....	County Office.....	468-4807
Montgomery, Barbara.....	Earle E. Williams Middle - Tracy Unified.....	831-5289
Montoya, Susanne.....	Stockton Unified.....	933-7055x2015
Moore, Evelyn.....	Manteca Unified.....	825-3200
Moore, Shawnterra.....	Inst. of Bus. Mang. & Law - Stockton Unified.....	933-7475

Morales, Jose.....	Stockton Unified.....	933-7000
Morehead, Janis.....	Lois E. Borchardt - Lodi Unified.....	331-8212
Morone, Patti.....	Ansel Adams Elementary - Lodi Unified.....	953-9601
Morris, Janell.....	County Office.....	468-4838
Morrow, Lance.....	Ripon High - Ripon Unified.....	599-4287
Mousalimas, James.....	County Office.....	468-9107
Munsch, Dale.....	Lodi Unified.....	331-7211
Murray, Judy.....	School Readiness/Preschool - Lodi Unified.....	331-7252
Myrick, Harriet.....	Joshua Cowell - Manteca Unified.....	825-3310

N

Nan, Louise.....	Ripon Unified.....	599-2131
Nash, Linda.....	Linden Unified.....	887-3894
Nava, Joe.....	Lodi Unified.....	953-8000
Nelson, Will.....	Cesar Chavez High - Stockton Unified.....	933-7480
Nichols-Washer, Catherine.....	Lodi Unified.....	331-7010
Nickols, Deb.....	County Office.....	468-9111
Nielsen, Shane.....	Lammersville Elementary.....	836-7400
Nilmeyer, Cheryl.....	Ellerth E. Lawrence Elem. - Lodi Unified.....	331-8391
Noceti, Deborah.....	Nile Garden Elem. - Manteca Unified.....	825-3410
Noll, Jason.....	Tracy High - Tracy Unified.....	830-3360
Nunez, Manuel.....	County Office.....	468-9291

O

O'Leary, David.....	New Haven Elem. - Manteca Unified.....	825-3400
Oden, Teresa.....	El Dorado Elementary - Stockton Unified.....	933-7175
Oechel, Maureen.....	Colonial Heights Elem. - Lincoln Unified.....	953-8783
Ogden, Mona.....	Park View Elementary - Ripon Unified.....	599-1882
Oien, Joanne.....	New Hope Elementary.....	794-2376
Oliver, Connie.....	County Office.....	468-4880
Olmstead, Janet.....	Lincoln Unified Teachers' Association.....	483-2118
Orr, Robin.....	County Office.....	468-9296
Ortega, Margarito.....	Valenzuela Elementary - Stockton Unified.....	933-7300
Ortiz, Olivia.....	County Office.....	468-9209
Ott, Kimberly.....	County Office.....	468-4813

P

Parker, Cathy.....	County Office.....	468-4880
Parks, Bill.....	Stagg High - Stockton Unified.....	933-7445
Parks, Donna.....	Ripon Unified.....	599-2131
Parrott, Kim.....	Lammersville Elementary.....	836-7400
Payne, Steve.....	New Jerusalem Elementary.....	835-6789
Pearson, Jeanne.....	Oak View Union Elementary.....	368-0636
Pearson, Susan.....	Sierra High - Manteca Unified.....	858-7410
Pehl, Carol.....	Oak View Union Elementary.....	368-0636
Penn, Julie.....	Stockton Unified.....	933-7130x2560
Pennington, Catherine.....	Lodi Unified.....	331-7257
Perez, Janet.....	Morada Middle - Lodi Unified.....	331-7490
Perez, Sheree.....	Millswood Middle - Lodi Unified.....	331-8332
Peters, Katie.....	New Vision Educational Center - Manteca Unified.....	938-6225
Petsche, Janet.....	Lincoln Unified.....	953-8714
Pettis, Lisa.....	Waverly Elementary - Linden Unified.....	931-0735
Petz, Chuck.....	New Jerusalem Elementary.....	835-2597
Phillips, Gary.....	Glenwood Elementary - Linden Unified.....	931-3229

Phillips, Henry.....	Harrison Elementary - Stockton Unified.....	933-7205
Pickering, Dave.....	Tracy Adult School - Tracy Unified.....	830-3384
Pimentel, Tony.....	Linden Elementary - Linden Unified.....	887-3600
Plotkin, Scott.....	CA School Board Association.....	800-266-3382
Pobert, Ben.....	Lammersville Elementary.....	836-7400
Pocoroba, Kathy.....	New Jerusalem Educators' Association.....	835-2597
Podesta III, Fred.....	Linden Unified.....	887-3894
Porter, Nicole.....	County Office.....	468-4855
Prioste, Stephanie.....	Monte Vista Middle - Tracy Unified.....	830-3340
Puga, Lupe.....	County Office.....	334-5436
Purkins, Princetta.....	Parklane Elementary - Lodi Unified.....	331-7409

R

Raab, Dorothy.....	Jefferson Elementary.....	839-1842
Ramirez, Sal.....	Stockton Unified.....	933-7000
Ramos, Veronica.....	County Office.....	468-9223
Randrup, Dan.....	County Office.....	468-4809
Ratto, Jacqueline.....	County Office.....	468-4937
Rausser, Greg.....	Oak View Union Elementary.....	368-0636
Raya, Joaquin.....	County Office.....	468-9219
Reasoner, Karen.....	County Office.....	468-5988
Reyna, Joel.....	County Office.....	468-9220
Ringen, Ione.....	Van Buren Elementary - Stockton Unified.....	933-7310
Rivas, Carol.....	Clyde W. Needham - Lodi Unified.....	331-7375
Rivas, Robert.....	Liberty High - Lodi Unified.....	331-7633
Rivera, Janet.....	San Joaquin Delta Community College.....	954-5151
Roberts, Frances.....	Manteca Unified.....	858-0797
Rocha, Daniel.....	Banta Elementary.....	835-0843
Rodriguez, Kris.....	County Office.....	468-4928
Rodriguez, Raul.....	San Joaquin Delta Community College.....	954-5018
Rodriguez, Sandra.....	Escalon Unified.....	838-3591
Rogers, Janet.....	Wagner-Holt Elementary - Lodi Unified.....	953-8407
Roncale, Ray.....	Escalon Unified Teachers' Association.....	838-7031
Ross, William (Bill).....	Stockton Unified.....	933-7000
Ruger, Debbie.....	Brock Elliott Elem. - Manteca Unified.....	858-7260
Ruiz, Sergio.....	County Office.....	468-9203
Ruley, Yanick.....	Wilhelmina Henry - Stockton Unified.....	933-7490
Russell, Clair.....	Ripon Unified Teachers' Association.....	599-4225

S

Sahli, Robert.....	Stockton Unified.....	933-7030x2330
St. George, Margaret.....	County Office.....	468-4908
Saiffudiri, Saida.....	Lincoln Unified.....	953-8700
Salazar-Huerta, Margaret.....	County Office.....	468-9200
Salvetti, Gretchen.....	Ben Holt College Prep - Aspire Charter.....	955-1477
Sanchez, Marco.....	Lodi Middle - Lodi Unified.....	331-7544
Sanders, Susan.....	Mossdale - Manteca Unified.....	938-6285
Sandoval, Aracely.....	County Office.....	468-4741
Sandstrom, Erik.....	Tokay High - Lodi Unified.....	331-7850
Sandstrom, Kelly.....	Tully C. Knoles - Lincoln Unified.....	953-8775
Sasser, Cindy.....	Melville S. Jacobson - Tracy Unified.....	830-3315
Saul, Carol.....	Oak View Union Elementary.....	368-0636
Saunders, Bill.....	Lodi Unified.....	331-7046
Schafer, Carla.....	County Office.....	468-4829
Schlitz, Robin.....	Parent Teacher Student Association.....	634-6287
Schmidig, Richard.....	Pride High - Linden Unified.....	942-2695

Schmiedt, Clara.....	Weston Ranch High - Manteca Unified	938-6245
Schumacher, Janna	Hoover Elementary - Stockton Unified.....	933-7215
Scully, Michael.....	Oak View Union Elementary	368-0636
Seaton, Shela.....	County Office	468-9056
Seelye, Michael.....	Manteca Unified.....	825-3200
Seifert, Stanley	Oak View Union Elementary	368-0636
Semillo, John.....	Elmwood Elementary - Stockton Unified.....	933-7180
Sexton, Michael.....	County Office	468-4902
Shepherd, Tim.....	Davis Elementary - Lodi Unified.....	331-7301
Shigematsu, Denise	Oakwood Elementary - Lodi Unified	331-7392
Silva, Frank.....	Banta Elementary	835-0843
Silveira, David.....	Lathrop Elementary - Manteca Unified	858-7250
Silveira, Stacie.....	County Office	468-9295
Simas, Ted.....	San Joaquin Delta Community College.....	954-5151
Simonich, Don.....	County Office	468-9003
Singh, Gurmel	Hamilton Elementary - Stockton Unified	933-7395
Singh, Satinder.....	County Office	468-9177
Skeels, Kathleen.....	County Office	468-4925
Slater, Mitch.....	Lodi Unified.....	331-7181
Smith, Stan	Association of Linden Educators.....	931-0735
Small, Ron.....	John Marshall - Stockton Unified	933-7405
Smith, Kitsy.....	Vinewood Elementary - Lodi Unified.....	331-7445
Solina, Anthony	Langston Hughes - Aspire Charter	465-4100
Sonnenburg, Donna.....	Tracy Unified	831-5082
Sorgent, Dave	County Board	468-4802
Sosa-Kropp, Olivia.....	County Office	468-4865
Soto, Ramona.....	South/West Park - Tracy Unified.....	830-3335
Sousa, Michael.....	Grunsky - Stockton Unified.....	933-7200
Spracher-Anderson, Suzanne	Kennedy Elementary - Stockton Unified.....	933-7225
Spaulding, Bruce.....	Lakewood Elementary - Lodi Unified	331-7348
Speaks, Dawn.....	County Office	468-9198
Springer, Jerry	County Office	468-4870
Springmeyer, Jane.....	New Hope Elementary.....	794-2376
Stallworth, Gayle.....	Dr. Lewis Dolphin Stallworth Charter	947-4511
Standridge, Valerie.....	Dolores Huerta - Stockton Unified	933-7220
Stanton, Janai.....	County Office	468-9151
Starr, Mamie	County Office	468-9061
Stebbins, C. Jennet	San Joaquin Delta Community College.....	954-5151
Steinkamp, Jane.....	Linden Unified	887-3894
Stephens, Jon.....	San Joaquin Delta Community College.....	954-5022
Stevens-Asplund, Elizabeth.....	County Office	468-5906
Stewart, Larry.....	Ripon Unified.....	599-2131
Stewart, Virginia	Tracy Learning Center - Tracy Unified	831-5240
Strader, Margaret.....	Stockton Skills - Stockton Unified	933-7415
STRS Counselors.....	County Office	468-4864
Sun, Warren.....	Lodi Unified.....	331-7155
Swenson, Bill.....	Tracy Unified	830-3200

T

Takemoto, Steve.....	Delta Sierra Middle - Lodi Unified	331-7510
Talley, Gretchen.....	County Board	468-4802
Tate, Connie.....	County Office	468-4868
Tate, Kelly.....	County Office	468-4827
Tatum, Michele.....	Lincoln Unified.....	953-8726
Tatum, Scott.....	Lincoln Elementary - Lincoln Unified.....	953-8652
Taylor, Camille.....	Ripon Unified.....	599-2131
Teicheira, Nancy.....	Manteca Unified.....	825-3200

Thibodeau, Caroline	Manteca Unified.....	858-0780
Thiel, Mark A.	County Board	468-4802
Thomas, James C.	County Office	468-4807
Thomas, Dr. Shawnterra.....	Inst. of Business Man. & Law - Stockton Unified...	933-7475
Thomasson, Mike	County Office	468-5924
Thoming, David.....	New Jerusalem Elementary	830-6789
Thomson, Lorna.....	County Office	468-4899
Thompson, Jeffrey.....	Lodi Unified.....	331-7000
Titus, Clay	Linden Unified	887-3894
To-Cowell, Van Ha	Lincoln Unified.....	953-8700
Toledo, Bill.....	Plaza Robles High - Lodi Unified.....	331-7283
Tollini, Jaclyn.....	County Office	953-2113
Tomlin, Cecil.....	Stockton Unified.....	933-7145x2660
Torres, Jose	New Hope Elementary.....	794-2376
Torres, Robert.....	Stockton Unified.....	933-7090x2165
Traub, Scott	Stockton Unified	933-7105x2201
Turner-Kelly, Suzan	Joseph Jr. Widmer - Manteca Unified.....	858-0650
Tyhurst, Ernie	Ripon Unified.....	599-2131

U

Ulmer, Sylvia.....	George W. Bush - Stockton Unified	933-7350
Uslan, Tom.....	Lincoln Unified.....	953-8790

V

Vaccarezza, Marvin	Linden Unified	887-3894
Valdez, Helen	County Office	334-5347
Varni, Marianne	Live Oak Elementary - Lodi Unified	331-7370
Vasquez, Mario	SJ Delta College Peace Officers Assoc.....	954-5000
Vaughan, James	Tracy Unified	830-3200
Vergara, Lem.....	Wicklund Elementary - Lammersville.....	836-7200
Vervais, Marie.....	County Office	468-9279
Vetica, Dawn.....	Lodi Unified.....	331-2153
Vidal, Charles	County Office	468-9056
Villafana, Juan Carlos.....	Victor Elementary - Lodi Unified.....	331-7441
	Tokay Colony Elementary - Lodi Unified.....	331-7438
Villegas, Felix.....	County Office	468-9061
Vink, Mary.....	Venture Academy Family of Schools	468-5940
Vos, Mark	El Portal Middle - Escalon Unified.....	838-7095

W

Walker, Lisa	Lincoln Unified.....	953-8712
Wall, Roberta.....	Independence - Lodi Unified	331-8364
	Plaza Robles High - Lodi Unified.....	953-8364
	San Joaquin Delta Community College.....	954-5632
Walton, Trudy	SJ County Coordinating Council/CTA	953-8920
Warman, Pam	Claudia Landeen - Lincoln Unified.....	953-8660
Washington, Carla	Willow Com./Duncan Russell - Tracy Unified.....	830-3357
Wax, David	Lodi Unified.....	331-7061
Weinzapfel, Steve.....	Banta Elementary	835-0843
Wehrs, Ellen	Mable Barron - Lincoln Unified.....	953-8796
Welch, Mary.....	Rosa Parks Academy - Aspire Charter	944-5590
Wells, Dan.....	Jefferson Elementary	836-3388
Wendell, Sandra	County Office	468-4973
Wentworth, Fredrick.....	County Office	468-4802

West, James.....	Stockton Unified.....	933-7085x2461
West, Lee.....	Kohl Open - Stockton Unified.....	933-7235
Wetherell, Todd.....	Jefferson Elementary.....	836-3388
Wetstein, Matt.....	San Joaquin Delta Community College.....	954-5039
Whelply, Mary.....	Westwood Elementary - Lodi Unified.....	953-8333
White, Mardy.....	Linden Unified.....	887-3894
Whitesides, Thomas.....	Walton Special Center - Stockton Unified.....	933-7315
Wickham, Veray.....	County Office.....	468-9021
Williams, Debbie.....	County Office.....	468-5986
Willis, Jason.....	Stockton Unified.....	933-6645
Wilson, Judi.....	County Office.....	468-4880
Wingo, Debbie.....	Jefferson Elementary.....	836-3388
Wright, Daniel.....	Stockton Unified.....	933-7040x2722
Wyllie, Eugene.....	Stockton Unified.....	933-7010x2054

Y

Yarbrough, Janet.....	Stockton Unified.....	933-7130x2618
Yasuri, Eric.....	Stockton Unified.....	933-7030x2616
Yocum, Gary.....	Lodi Unified.....	331-7213
Yorba, KT.....	County Office.....	468-4830
Yost, Mark.....	County Office.....	468-9104
Young, Calvin.....	Lodi Unified.....	331-7000
Young, Neil.....	Lodi Unified.....	331-8903

Z

Zapp, Joseph.....	Stockton Unified.....	933-7045x2346
-------------------	-----------------------	---------------

Schools

A

Adams Elementary	Stockton Unified	933-7155
Anthony C. Traina Elementary	Jefferson Elementary	839-2379
Ansel Adams Elementary	Lodi Unified	953-9601
Art Freiler Elementary	Tracy Unified	831-5170
Aspire Langston Hughes Academy	Charter - Stockton Unified	465-4100
August Elementary	Stockton Unified	933-7160
August Knodt Elementary	Manteca Unified	938-6200

B

Banta Elementary	Banta Elementary	835-0171
Bear Creek High	Lodi Unified	331-7234
Beckman Elementary	Lodi Unified	331-7410
Benjamin Holt College Prep. Academy	Charter - Lodi Unified	955-1477
Bethany Elementary	Lammersville Elementary	836-7250
Brock Elliott Elementary	Manteca Unified	858-7260
Brookside School	Lincoln Unified	953-8642

C

California Virtual Acad. at San Joaquin	Charter - Stockton Unified	866-339-6790
Calla High	Manteca Unified	858-7230
Central Elementary	Tracy Unified	830-3303
Cesar Chavez High	Stockton Unified	933-7480
Christa McAuliffe Middle	Lodi Unified	953-9431
Clairmont Elementary	Lodi Unified	953-8267
Claudia Landeen School	Lincoln Unified	953-8660
Clements Elementary	Lodi Unified	331-7300
Cleveland Elementary	Stockton Unified	933-7165
Clyde W. Needham	Lodi Unified	331-7375
Collegeville Elementary	Escalon Unified	941-2007
Colonial Heights School	Lincoln Unified	953-8783
Colony Oak Elementary	Ripon Unified	599-7145
Creekside Elementary	Lodi Unified	331-7285

D

Davis Elementary	Lodi Unified	331-7301
Delta Charter School	Charter - New Jerusalem	830-6363
Delta Sierra Middle	Lodi Unified	331-7510
Dent Elementary	Escalon Unified	838-7031
Discovery Charter (Tracy Learning Center)	Charter - Tracy Unified	831-5240
Dolores Huerta Elementary	Stockton Unified	933-7220
Don Riggio School	Lincoln Unified	953-8761
Dorothy J. Mahin	Lodi Unified	331-7366
Dr. Lewis Dolphin Stallworth	Charter - Stockton Unified	943-0353

Duncan-Russell.....	Tracy Unified	830-3357
Durham Ferry	Charter - Venture Acad. Family of Schools...	468-5940

E

Earle E. Williams Middle.....	Tracy Unified	830-3345
East Union High.....	Manteca Unified.....	858-7270
Edison High	Stockton Unified.....	933-7425
El Dorado Elementary.....	Stockton Unified.....	933-7175
Elkhorn	Lodi Unified.....	331-7330
Ellerth Larson.....	Lodi Unified.....	331-8391
Elmwood Elementary	Stockton Unified.....	933-7180
El Portal Middle	Escalon Unified	838-7095
Erma B. Reese Elementary.....	Lodi Unified.....	331-7424
Escalon High	Escalon Unified	838-7073

F

Farmington Elementary.....	Escalon Unified	886-5344
Fillmore Elementary.....	Stockton Unified.....	933-7185
Franklin High.....	Stockton Unified.....	933-7435
French Camp Elementary	Manteca Unified.....	938-6370

G

George & Evelyn Stein High.....	Tracy Unified	830-3395
George Kelly Elementary.....	Tracy Unified	831-5000
George Lincoln Mosher.....	Lodi Unified.....	953-9298
George McParland Elementary	Manteca Unified.....	858-7290
George McParland Elementary Annex.....	Manteca Unified.....	825-4281
George W. Bush Elementary	Stockton Unified.....	933-7350
George Washington Elementary	Lodi Unified.....	331-7451
George Washington Elementary	Stockton Unified.....	933-7320
George Y. Komure Elementary	Manteca Unified.....	234-4812
Gladys Poet-Christian Elementary	Tracy Unified	831-5252
Glenwood Elementary.....	Linden Unified	931-3229
Golden West Elementary.....	Manteca Unified.....	858-7300
Great Valley Elementary	Manteca Unified.....	938-6300
Great Valley Elementary Annex	Manteca Unified.....	938-6310
Grunsky Elementary.....	Stockton Unified.....	933-7200

H

Hamilton Elementary	Stockton Unified.....	933-7395
Harrison Elementary.....	Stockton Unified.....	933-7205
Hazelton Elementary	Stockton Unified.....	933-7210
Henderson Community Day.....	Lodi Unified.....	331-7331
Heritage Primary Elementary	Lodi Unified.....	331-7334
Hoover Elementary.....	Stockton Unified.....	933-7215
Houston Elementary.....	Lodi Unified.....	331-7475

I

Independence School	Lodi Unified	331-8364
Institute for Global Commerce & Govt.....	Tracy Unified	830-3380
Institute of Business Mgmt. & Law	Charter - Stockton Unified.....	933-7475

J

Jane Frederick Continuation High	Stockton Unified	933-7340
Jefferson School	Jefferson Elementary.....	835-3053
Joe Jr. Serna Charter	Charter - Lodi Unified	331-7809
John C. Fremont Elementary	Stockton Unified	933-7385
John C. Kimball High	Tracy Unified	832-6600
John J. McFall School.....	County Office.....	823-1383x11
John Marshall Elementary	Stockton Unified	933-7405
John McCandless Center	Lincoln Unified.....	953-8740
John Muir Elementary	Lodi Unified	331-7312
John R. Williams School	Lincoln Unified.....	953-8767
Joseph Jr. Widmer Elementary	Manteca Unified.....	858-0650
Joshua Cowell Elementary	Manteca Unified.....	858-7310
Julia Morgan Elementary	Lodi Unified.....	953-8453

K

Kennedy Elementary	Stockton Unified	933-7225
King Elementary.....	Stockton Unified.....	933-7230
Kohl Open School.....	Stockton Unified.....	933-7235

L

Lakewood Elementary	Lodi Unified	331-7348
Lammersville Elementary	Lammersville	835-0138
Lathrop Elementary	Manteca Unified.....	858-7250
Lathrop High School.....	Manteca Unified.....	938-6350
Lawrence Elementary	Lodi Unified.....	331-7356
Leroy Nichols Elementary.....	Lodi Unified	331-7378
Liberty High.....	Lodi Unified.....	331-7633
Lincoln Elementary	Lincoln Unified.....	953-8652
Lincoln Elementary	Manteca Unified	825-3380
Lincoln High.....	Lincoln Unified	953-8921
Lincoln Technical Academy	Lincoln Unified.....	331-7617
Lindbergh Adult School	Manteca Unified	825-3100
Linden Elementary.....	Linden Unified	887-3600
Linden High.....	Linden Unified	887-3073
Live Oak Elementary	Lodi Unified	953-8370
Lockeford Elementary	Lodi Unified	331-7214
Lodi High.....	Lodi Unified	331-7815
Lodi Middle.....	Lodi Unified	331-7544
Lois E. Borchardt Elementary.....	Lodi Unified	331-8212
Louis A. Bohn Elementary	Tracy Unified	830-3300
Louis J. Villalovoz Elementary.....	Tracy Unified	830-3331

M

Mable Barron Elementary.....	Lincoln Unified.....	953-8796
Madison Elementary	Stockton Unified	933-7240
Manlio Silva Elementary.....	Lodi Unified.....	953-9302
Manteca Day School.....	Manteca Unified.....	239-6282
Manteca High.....	Manteca Unified.....	825-3150
Maxine Hong Kingston Elementary.....	Stockton Unified.....	933-7493
McKinley Elementary.....	Stockton Unified.....	933-7245
McKinley Elementary.....	Tracy Unified.....	830-3319
Melville S. Jacobson Elementary.....	Tracy Unified.....	830-3315
Merlo Institute of Environ. Tech.....	Stockton Unified.....	933-7190
Merrill F. West High.....	Tracy Unified.....	830-3370
Middle College High.....	Lodi Unified.....	954-5790
Millenium High (Tracy Learning Center).....	Charter - Tracy Unified.....	831-5240
Millswood Middle.....	Lodi Unified.....	331-8332
Monte Vista Middle.....	Tracy Unified.....	830-3340
Montezuma Elementary.....	Stockton Unified.....	933-7255
Monticello Elementary.....	Jefferson Elementary.....	833-9300
Morada Middle.....	Lodi Unified.....	331-7490
Mossdale Elementary.....	Manteca Unified.....	938-6285

N

Neil Hafley Elementary.....	Manteca Unified.....	858-7215
New Haven Elementary.....	Manteca Unified.....	825-3400
New Hope Elementary.....	New Hope.....	794-2376
New Jerusalem.....	Charter - New Jerusalem.....	835-6789
New Jerusalem Elementary.....	New Jerusalem.....	835-2597
New Vision Educational Center.....	Manteca Unified.....	938-6225
Nightingale Elementary.....	Stockton Unified.....	933-7260
Nile Garden Elementary.....	Manteca Unified.....	825-3410
North Elementary.....	Tracy Unified.....	830-3350

O

Oak View Elementary.....	Oak View Union.....	368-0636
Oakwood Elementary.....	Lodi Unified.....	331-7392

P

Parklane Elementary.....	Lodi Unified.....	331-7409
Park View Elementary.....	Ripon Unified.....	599-1882
Peyton Elementary.....	Stockton Unified.....	933-7420
Plaza Robles High.....	Lodi Unified.....	331-7283
Podesta Ranch Elementary.....	Lodi Unified.....	953-8543
Pride High School.....	Linden Unified.....	942-2695
Primary Charter (Tracy Lrng. Ctr.).....	Charter - Tracy Unified.....	831-5240
Pulliam Elementary.....	Stockton Unified.....	933-7265

R

Redwood School	County Office.....	931-4047x14
Richard A. Pittman Elementary	Stockton Unified.....	933-7496
Rio Calaveras Elementary.....	Stockton Unified.....	933-7270
Ripon Elementary.....	Ripon Unified.....	599-4225
Ripon High.....	Ripon Unified.....	599-4287
Ripona Elementary.....	Ripon Unified.....	599-4104
River Oaks Charter.....	Charter - Lodi Unified.....	956-8100
Ronald E. McNair High.....	Lodi Unified.....	953-9245
Roosevelt Elementary.....	Stockton Unified.....	933-7275
Rosa Parks Academy.....	Charter - Stockton Unified.....	944-5590

S

San Joaquin Career and Tech. High	Charter - Venture Acad. Fam. of Schools.....	953-2112
San Joaquin Delta Community College	San Joaquin Delta Community College.....	954-5151
San Joaquin Elementary.....	Stockton Unified.....	933-7280
School for Adults	Stockton Unified.....	933-7455
School Readiness/Preschool Services	Lodi Unified.....	331-7252
Sequoia Elementary.....	Manteca Unified.....	858-7440
Shasta Elementary.....	Manteca Unified.....	858-7400
Sierra High.....	Manteca Unified.....	858-7410
Sierra Middle.....	Lincoln Unified.....	953-8748
South/West Park Elementary	Tracy Unified.....	830-3335
Stagg High.....	Stockton Unified.....	933-7445
Stella Brockman Elementary.....	Manteca Unified.....	858-7200
Stockton Alternative High School.....	Charter - Stockton Unified.....	933-7000
Stockton Skills School.....	Stockton Unified.....	933-7415
Stockton Unified Early College.....	Charter - Stockton Unified.....	933-7370x1492
Sture Larsson High.....	Lincoln Unified.....	953-8687
Sutherland Elementary.....	Lodi Unified.....	953-8999

T

Taft Elementary	Stockton Unified.....	933-7285
Taylor Skills School	Stockton Unified.....	933-7290
Tokay Colony Elementary.....	Lodi Unified.....	331-7438
Tokay High.....	Lodi Unified.....	331-7990
Tom Hawkins Elementary.....	Jefferson Elementary.....	839-2380
Tracy Adult School.....	Tracy Unified.....	830-3384
Tracy High.....	Tracy Unified.....	830-3360
Tracy Learning Center	Charter - Tracy Unified.....	831-5240
Tully C. Knoles School	Lincoln Unified.....	953-8775
Tyler Skills School.....	Stockton Unified.....	933-7295

U

University Public School.....	Charter - Lodi Unified.....	931-5399
-------------------------------	-----------------------------	----------

V

Valenzuela Elementary	Stockton Unified	933-7300
Van Allen Elementary	Escalon Unified	838-2931
Van Buren Elementary	Stockton Unified	933-7305
Venture Academy Family of Schools	Charter - County Office	468-5940
Veritas Elementary	Manteca Unified	858-7390
Victor Elementary	Lodi Unified	331-7441
Victory Elementary	Stockton Unified	933-7310
Vinewood Elementary	Lodi Unified	331-7445
Vista High	Escalon Unified	838-1450

W

Wagner-Holt Elementary	Lodi Unified	953-8407
Walter Woodward Elementary	Manteca Unified	858-7430
Walton Special Center	Stockton Unified	933-7315
Wanda Hirsch Elementary	Tracy Unified	831-3312
Waterloo School	Linden Unified	931-0818
Waverly School	Linden Unified	931-0735
Weber Inst. of Applied Sciences & Tech.	Stockton Unified	933-7330
Weston Elementary	Ripon Unified	599-7113
Weston Ranch High	Manteca Unified	938-6245
Westwood Elementary	Lodi Unified	953-8333
Wicklund Elementary	Lammersville Elementary	836-7200
Wilhelmina Henry Elementary	Stockton Unified	933-7490
Willow Comm. Day/Duncan Russell	Tracy Unified	830-3357
Wilson Elementary	Stockton Unified	933-7325
Woodbridge Elementary	Lodi Unified	331-8160

SJCO

San Joaquin County Public Schools Directory



SAN JOAQUIN COUNTY OFFICE OF EDUCATION

- PUBLISHED BY:
- SAN JOAQUIN COUNTY OFFICE OF EDUCATION
- Public Information Office
- 2901 Arch-Airport Road
- P.O. Box 213030
- Stockton, CA 95213-9030
- www.sjcoe.org