

Come and Join!

March 21st, 2023

8:30 AM - 3:30 PM

LSH Spring Symposium

Where: Zoom

Registration Fee:

***SJC County SELPA,
Stockton USD, Lodi USD, &
UOP: \$40***

***Other Agencies/School
Districts: \$50***

Click Below:

Journal

Credit Card

Check



About LSH Spring:

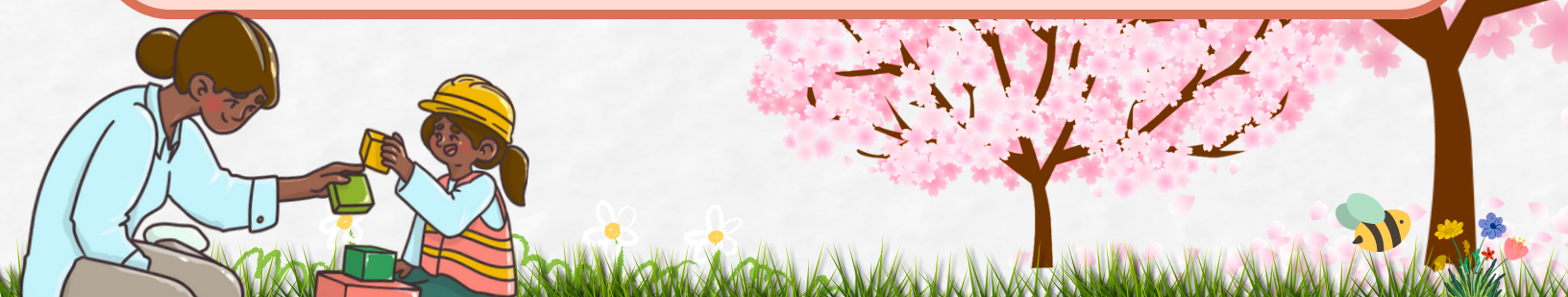
This course provides an overview of the key traits of autism in young children, a discussion of racial and gender disparities in autism, along with a summary of how to provide strengths-based, neurodiversity-affirming services centered around unrestricted access to multi-modal communication. The therapeutic strategies addressed in this course are not focused on establishing compliance or fixing deficits identified on standardized tests, but rather on helping autistic children learn and develop new skills through meaningful social interactions with the important people in their lives.

Establishing an appropriate treatment plan based on the principles of motor learning is essential when treating childhood apraxia of speech. This course will outline goal writing, target selection, therapy strategies and activities, use of multisensory cueing, and carryover techniques.



Objectives:

- Contrast speech therapy approaches for treating childhood apraxia of speech, phonological disorder, and articulation disorder
- Summarize the principles of motor learning and how to apply them in motor based speech therapy sessions
- Describe at least 5 therapy activities for supporting repetitive speech practice without doing drill work
- Summarize how to create strengths-based, neurodiversity affirming programming for autistic children
- Explain the racial and gender disparities in getting an autism diagnosis.
- Describe the importance of giving autistic children unrestricted access to multimodal communication at home, in the community, in therapy, and in the classroom



About the Presenter



Cari Ebert, MS, CCC-SLP, is a pediatric speech-language pathologist in private practice in the Kansas City, Missouri area. She received her bachelor's degree from the University of Iowa in 1993 and her master's degree from Southern Illinois University at Carbondale in 1995.

Cari is a therapist, consultant, author, and nationally recognized speaker who gets paid to do what she loves most...TALK! She has dedicated her career to helping young children achieve their maximum potential with speech, language, and social-emotional development. Cari has an autistic son, allowing her to engage audiences both as a professional and as a parent of a neurodivergent child.

Continuing Professional Development:

Speech-Language Pathologists and Audiologists can take courses to 24 hours of continuing professional development (CPD) for each biennial license renewal. Licenses must take courses from board approved providers and course subject matter must be related to the speech-language pathology and audiology scope of practice.

This course meets the qualifications for 6 hours of CPD for Speech-Language Pathologists as required by the California Speech-Language Pathology and Audiology Board.

