

8th Annual Early Childhood Education Conference

LET'S GET BRAVE TOGETHER: ESTABLISHING TRUST THROUGH OPEN AND HONEST CONVERSATIONS



SAN JOAQUIN COUNTY
OFFICE OF EDUCATION



Friday, Jan. 24, 2025

FREE event, registration required

Keynote by Senta Greene and
Dr. Kathleen Van Antwerp

5:30 p.m. - 8 p.m.

Free Keynote Registration
FRIDAY ONLY



Saturday, Jan. 25, 2025

8 a.m. - 3:30 p.m.

Conference Registration
FRIDAY & SATURDAY



CONFERENCE RATES

\$30

EARLY BIRD RATE

Full payment must be
received by Dec. 31, 2024

**FREE CONFERENCE T-SHIRT
ONLY AVAILABLE THROUGH
EARLY REGISTRATION**

\$40

REGULAR RATE

Full Payment must be
received by Jan. 24, 2025



Wentworth Education Center

2707 Transworld Dr.
Stockton, CA 95206

**Light dinner will be provided on
Friday. Breakfast and lunch will be
provided on Saturday.**

Please join us this year for a variety of conference sessions designed to support early educators working in family childcare, center-based, family, friend, and neighbor, home visitation, and school settings. Sessions will focus on family engagement and cultural competency, the intersection around culture and inclusion, difficult conversations in the workplace, honest conversations with children in challenging circumstances, and much more.

**Friday Only
Registration**

**Conference
Registration**



For more information, please contact Julius Almanza at
(209) 292-2881 or jalmanza@sjcoe.net.

If the workshop or event is canceled by the SJCOE, participants will be notified and provided a full refund. No refunds or credit will be given to participants who cancel or for no-shows. Substitutions are accepted.

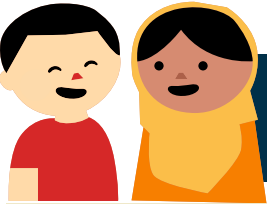
FRIDAY, JAN. 24, 2025

KEYNOTE Senta Greene and Dr. Kathleen Van Antwerp



Senta Greene and Dr. Kathleen Van Antwerp will deliver a powerful and thought-provoking keynote address that will inspire and equip attendees to champion diversity, equity, inclusion, and belonging in the early childhood education field. With a focus on strength-based approaches, courageous conversations, and cultural humility, their session will offer meaningful insights and practical strategies for addressing power dynamics in the workplace and fostering cross-cultural competence.

Drawing from research, lived experiences, and practices, this keynote will deeply engage the heart and mind, honoring the work of ECE professionals while supporting the conference's vision and mission. Participants will leave with tools to cultivate relationship-based care and leadership, ensuring a lasting impact on children, families, and the ECE workforce. This interactive and engaging presentation is designed around the principles of adult learning, blending ground-breaking literature, professional wisdom, and reflective practice for a transformative experience.



SATURDAY, JAN. 25, 2025 – LEARNING STRANDS

1. Motivational Interviewing Essentials

Facilitator: Jason Anthony Moreno
M.S., BCBA, LMFT, IFEC-MHS

Motivational Interviewing (MI) is an evidence-based counseling approach that prepares people for change by helping them to resolve ambivalence, increase motivation, and build confidence to change.

Originally developed for the treatment of heavy drinking, the foundational principles and methodologies have shown efficacy in other applications such as primary care (diet, exercise, medication adherence, risk behaviors), the criminal justice system, employment services, and education.

In this introductory workshop, participants will learn the goals, framework, and techniques of MI; as well as practice communicative strategies that build collaborative, respectful, and effective relationships with colleagues, and the families you serve.

2. Culture and Inclusion in Early Childhood Education

Facilitator: Lisa Kaplan Shaanan
MS OTR/L TMHP

This professional development session delves into the influence of culture on inclusive practices in early childhood education, with a particular emphasis on supporting children with disabilities. Participants will examine how cultural values—such as beliefs about disability, independence, and respect—shape approaches to child-rearing and education.

Participants will gain strategies for fostering culturally sensitive conversations with families and blending professional expertise with cultural humility to cultivate inclusive environments. The session offers practical tools to promote culturally responsive practices and build strong, collaborative partnerships with families, ensuring every child has the opportunity to thrive.

3. Power, Positionality, and Partnership: Building Inclusive and Equitable Communities in Education

Facilitator: Emerald Templeton, EdD

In our diverse educational communities, the concepts of power and positionality shape the experiences of children, families, educators, and school leaders. This presentation explores how understanding and navigating these dynamics is essential to fostering an inclusive, equitable environment for all.

Recognizing the unique roles each community member plays, we emphasize the importance of partnership between teachers, families, children, and school leaders to ensure shared success. This session invites participants to engage in meaningful conversations about their collective responsibility to promote inclusivity and equity through creating a climate of mutual respect and trust.

4. Difficult Conversations with Families

Facilitator: Inés M. Ruiz-Huston, Ed.D.

This interactive workshop will assess individuals own processes for communication and explore how to create safe spaces for dialogue and in-depth conversation that can empower as well as create a more meaningful environment for intercultural understanding.

Participants will learn about themselves and be introduced to strategies to promote growth in diversity and cultural competency.

5. Co-creating Safe, Compassionate, and Equity-Centered Spaces through Transformative Learning Conversations

Facilitator: Senta Greene and Dr. Kathleen Van Antwerp

This session focuses on creating environments where safety, compassion, and equity are at the forefront. Through transformative conversations, participants will explore practical strategies to build trust, foster cultural humility, and cultivate meaningful connections.

Participants will gain insights to support inclusive spaces that honor diverse perspectives and empower the ECE community to lead with empathy and equity.